

**Office Space for Rent**

**In Mondeal Heights**

**@ Nr.Wide Angle, S G Highway, Ahmedabad**

**Manage By**



**Gujarat Rera Reg No. AG/GJ/AHMEDABAD/AHMEDABAD  
CITY/AUDA/AA00067/310822R1**

**Office Address: B-210, Titanium City Centre, 100  
Feet Rd, Near Sachin Tower, Satellite,  
Ahmedabad, Gujarat 380015**

**(M): [090672 31161](tel:09067231161)**

**(E): [info@bquickproperty.com](mailto:info@bquickproperty.com)**

**(W): [www.bquickproperty.com](http://www.bquickproperty.com)**







MONDEAL  
HEIGHTS



A BUILDING, HIGH IN AIMS  
& WITH DEPTH IN DETAILING

MONDEAL  
HEIGHTS



TRULY A BUILDING WITH THE POTENTIAL TO CATER TO A NICHE CORPORATE BUSINESS COMMUNITY OF THE CITY. BE IT THE LOCATION, AMENITIES OR AMBIENCE IT WILL SECURE THE FIRST PLACE.

IF YOUR AMBITIONS ARE HIGH...MONDEAL HEIGHTS IS THE ONLY CHOICE !



# A SPACE

THAT IS NOT JUST THE ADDRESS  
FOR YOUR BUSINESS

BUT ALSO PLACES YOU AT THE MOST  
CONVENIENT & CONNECTED NETWORK OF THE CITY



- LOCATED ON S G HIGHWAY
- IN THE VICINITY OF MAJOR CORPORATE BUILDINGS
- PROXIMITY TO CITY'S MOST REPUTED HOTELS, CLUBS AND CONVENTIONS
- HI SPEED CONNECTIVITY TO INDUSTRIAL AREAS LIKE  
CHANGODAR, BAVLA, SARKHEJ & SANAND

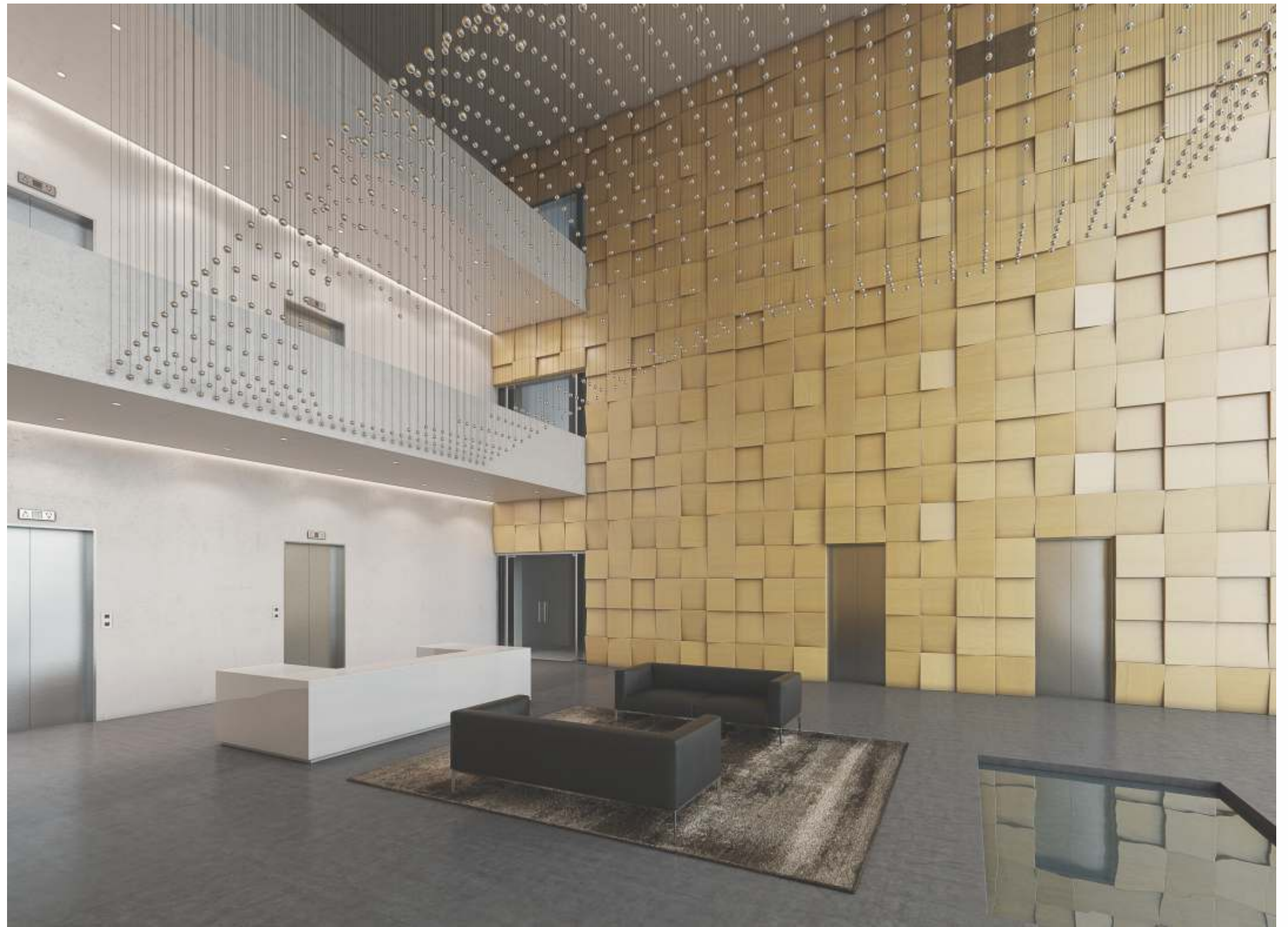
MONDEAL  
HEIGHTS 



# A SPACE

THAT IS NOT JUST  
WALLS AND FLOORS  
BUT ALSO HAS  
THE MOST COVETED  
CORPORATE  
ENVIRONMENT

- DESIGNED BY RENOWNED INTERNATIONAL ARCHITECTS
- DEVELOPMENT ON 4 ACRES LAND PARCEL WITH 73% OPEN SPACE
- AIR CONDITIONED TRIPLE HEIGHT GRAND ENTRANCE LOBBY
- VALET, CONCIERGE AND HELP DESK FACILITY FOR VISITORS
- NO RETAIL SPACE ON THE GROUND FLOOR





- 24 PASSENGERS CAPACITY - HIGH SPEED 14 ELEVATORS OF MNC BRAND
- PROVISION OF 3 PHASE VRV FACILITY
- HI-TECH SAFETY & SECURITY MEASURES
- PROFESSIONAL PROPERTY MANAGEMENT TEAM
- OPTICAL FIBRE NETWORK BUILDING
- DG BACK UP FOR COMMON FACILITIES
- HI- END FIRE PROTECTION SYSTEM
- DOUBLE BASEMENT PARKING

# A SPACE

THAT IS NOT JUST A SETUP FOR YOU TO DO A BUSINESS  
BUT ALSO AN ELEVATION  
FOR YOUR BUSINESS

PLAN BOOKLET ▶▶▶

MONDEAL  
HEIGHTS 

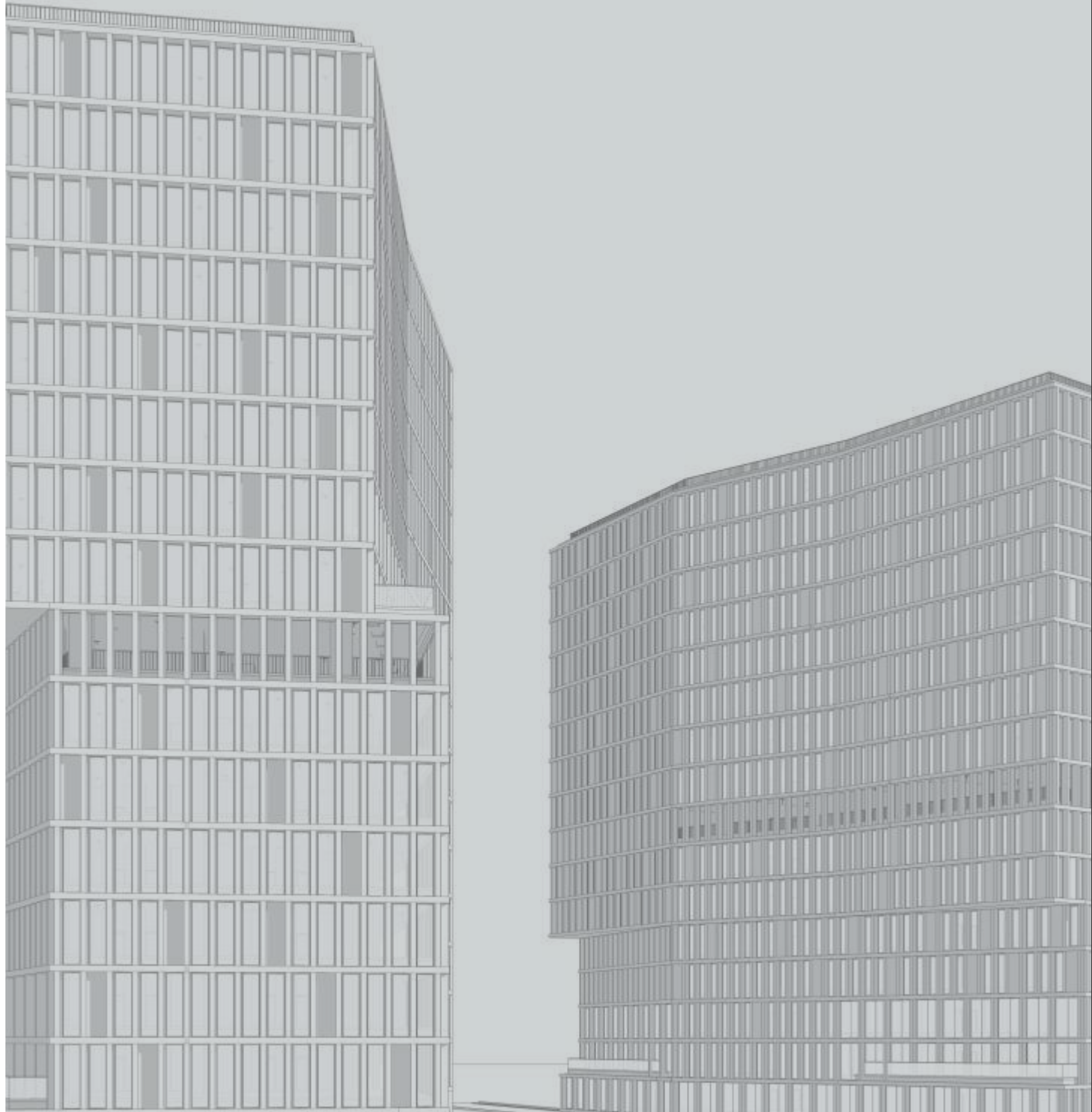




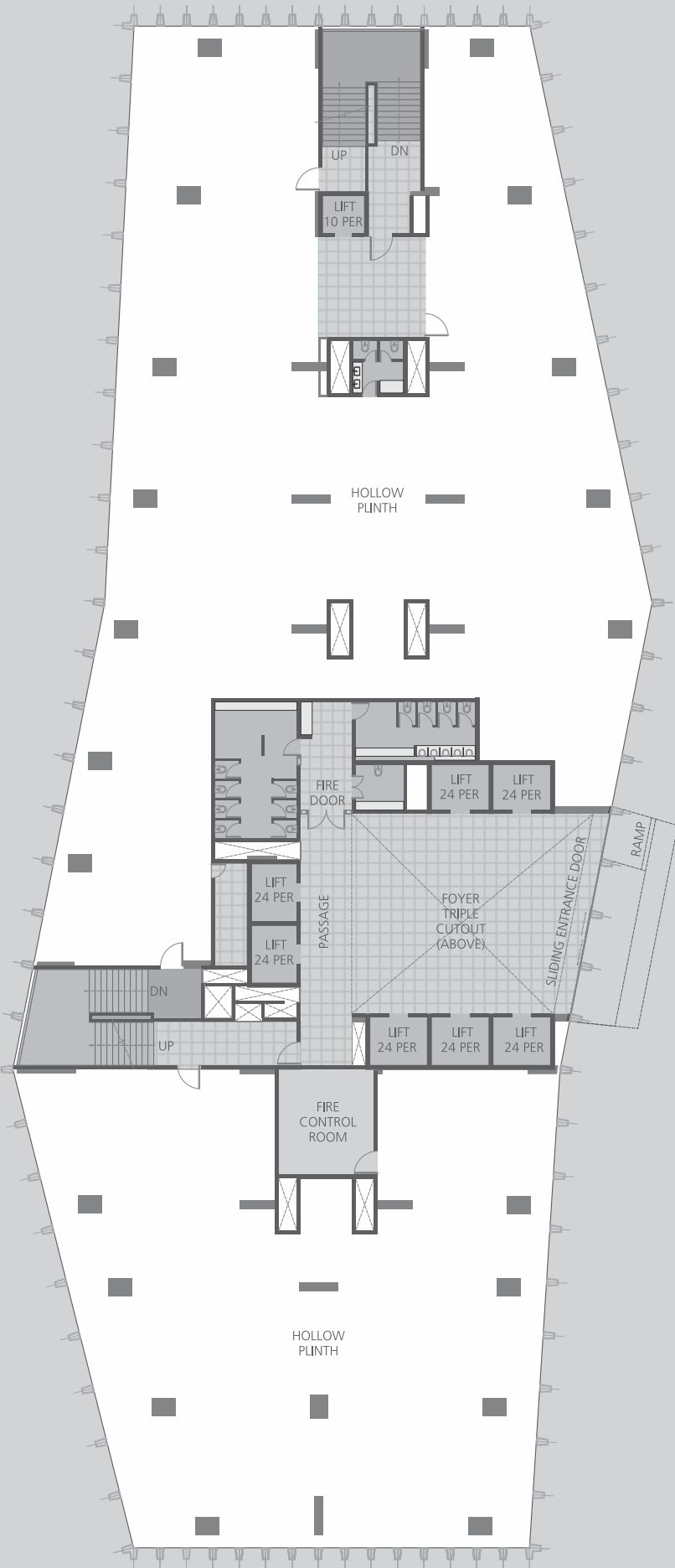
MONDEAL  
HEIGHTS

# LAYOUTS

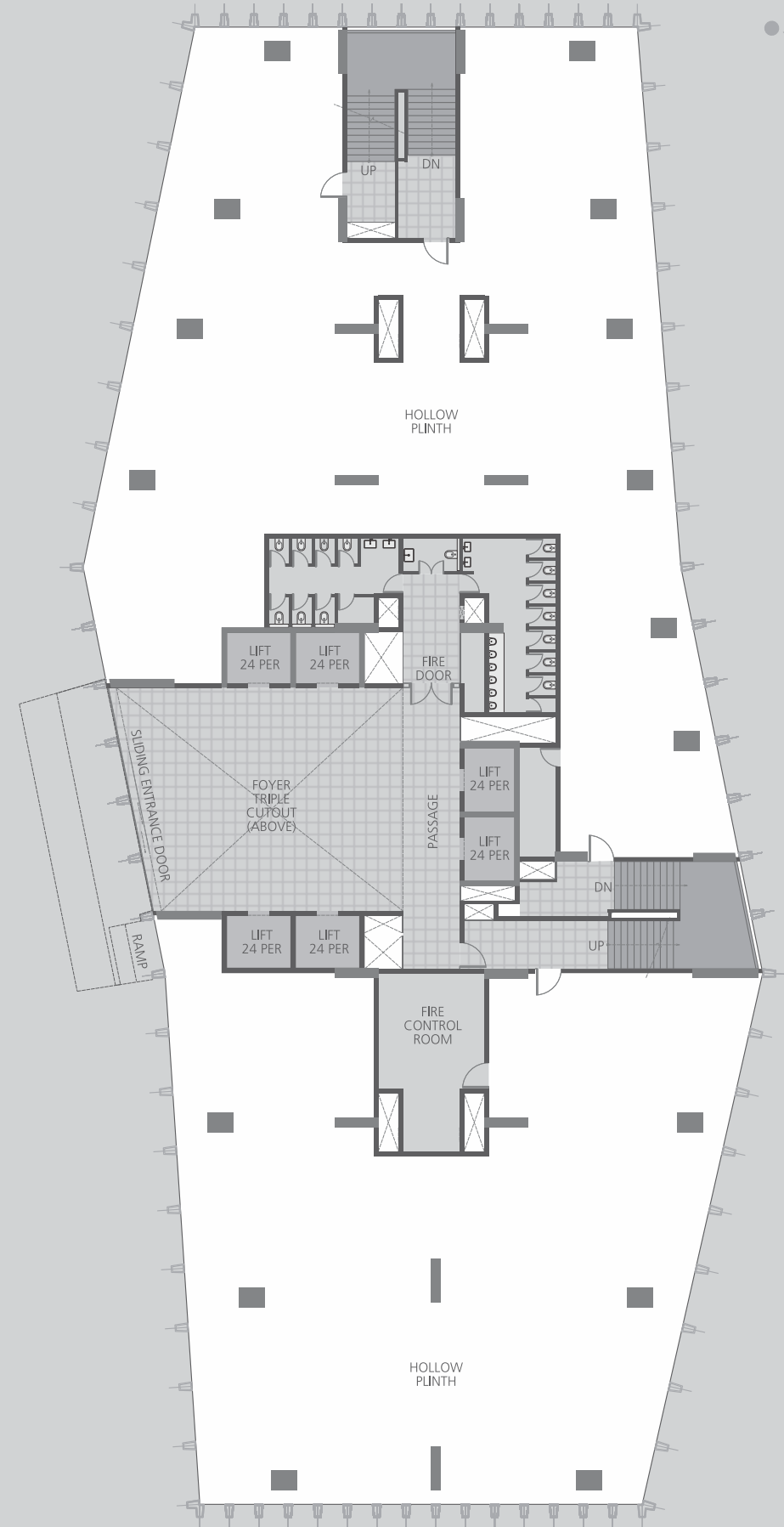
# SITE LAYOUT



# FLOOR LAYOUT

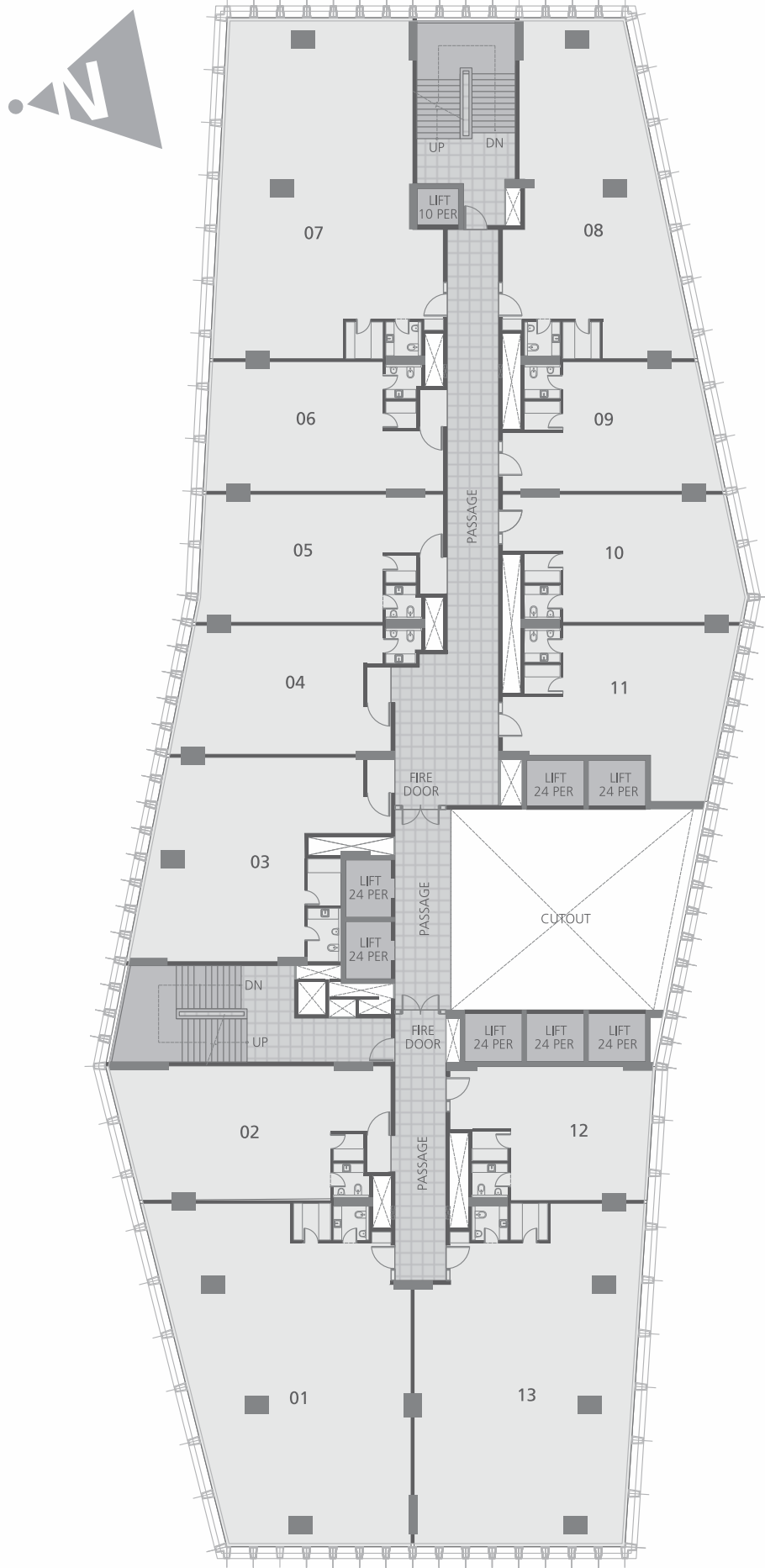


TOWER A GROUND FLOOR



GROUND FLOOR TOWER B

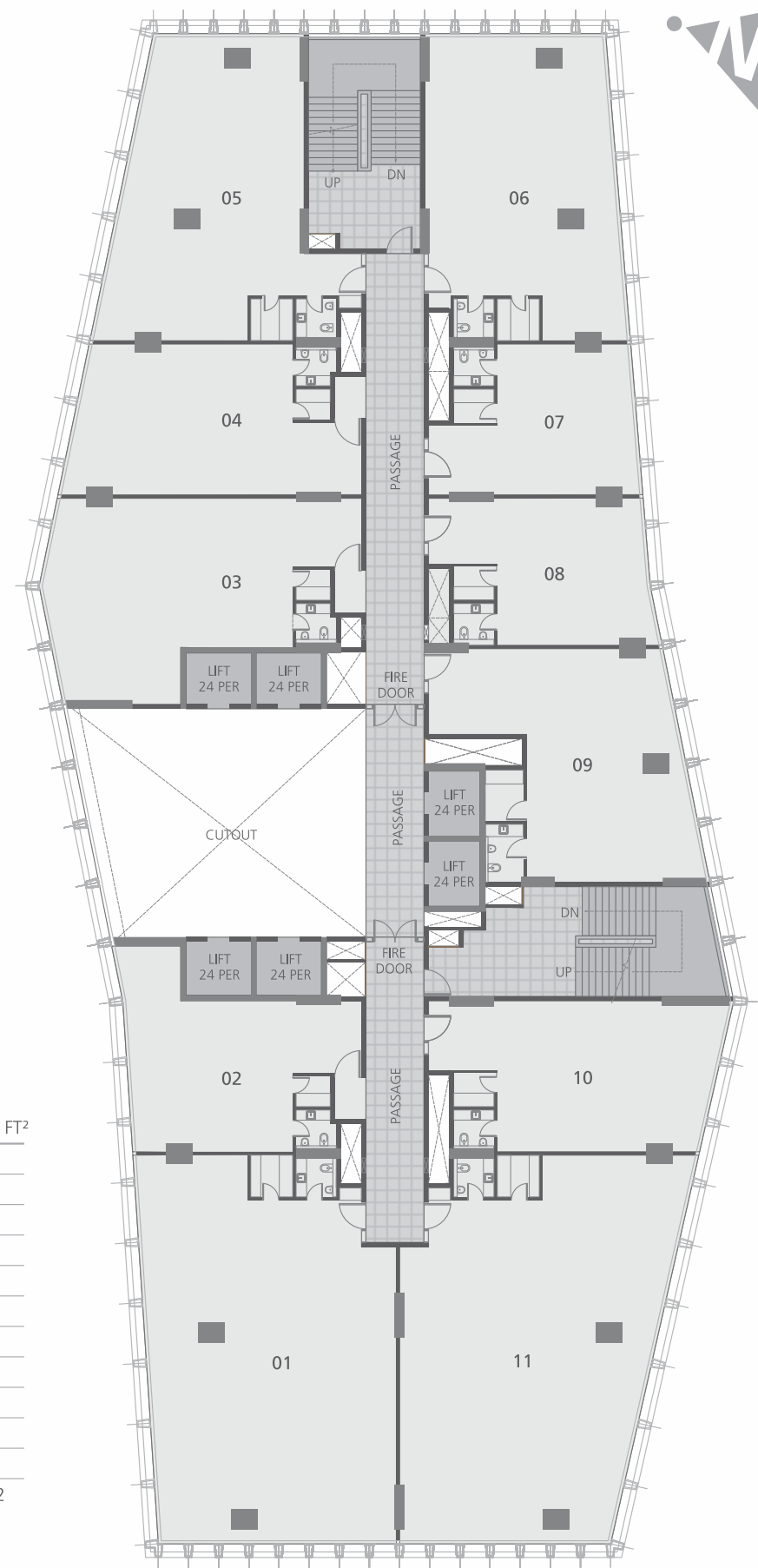
# FLOOR LAYOUT



OFFICE NO.	S.B.A IN FT <sup>2</sup>
01	3557
02	1676
03	2024
04	1341
05	1450
06	1427
07	3264
08	2345
09	1267
10	1412
11	1511
12	1255
13	3406
TOTAL	25935

1st & 2nd FLOOR

# TOWER A

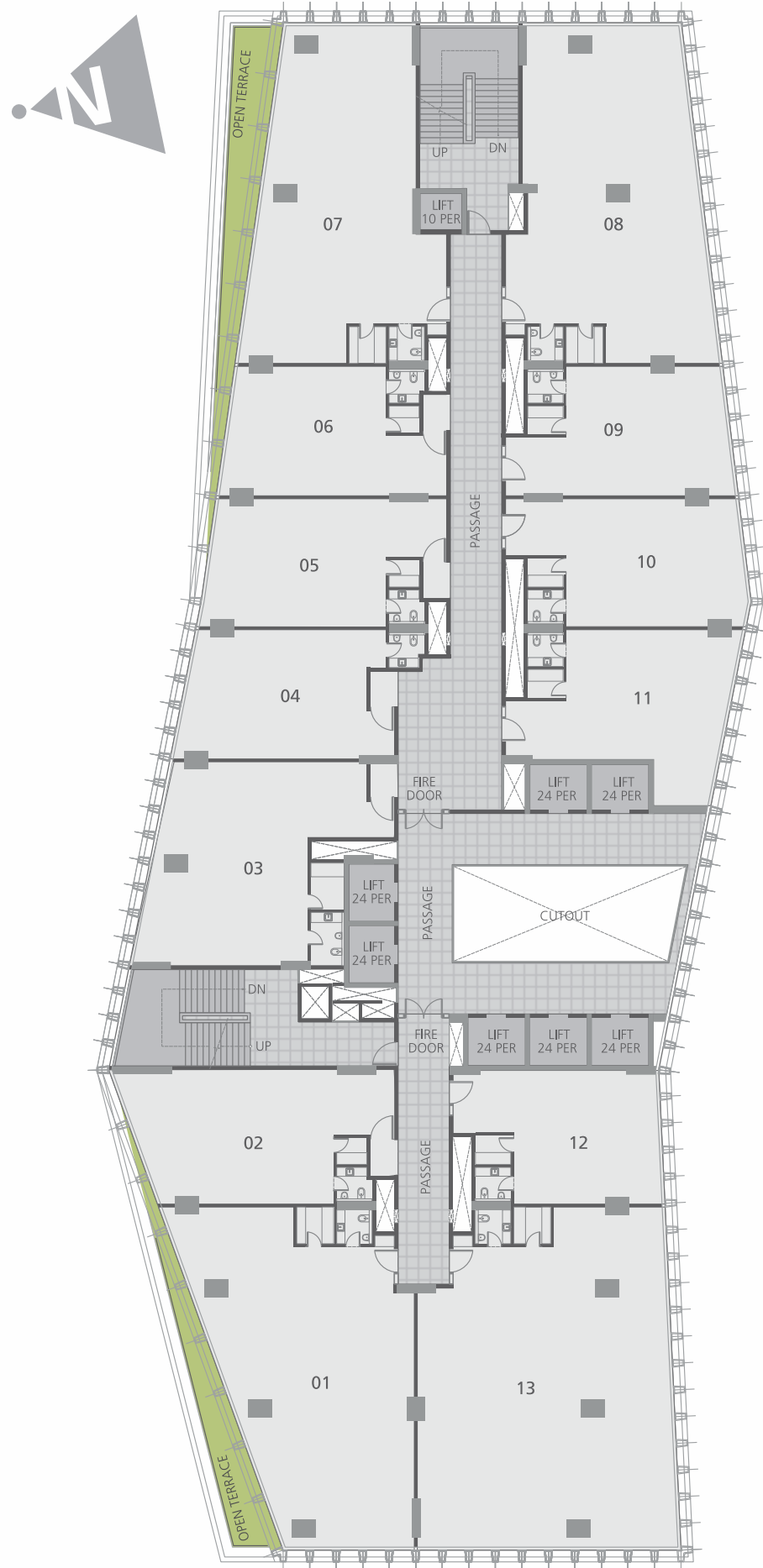


OFFICE NO.	S.B.A IN FT <sup>2</sup>
01	3395
02	1393
03	1938
04	1560
05	2200
06	2127
07	1135
08	1181
09	1869
10	1570
11	3474
TOTAL	21842

1st & 2nd FLOOR

# TOWER B

# FLOOR LAYOUT



OFFICE NO.	S.B.A IN FT <sup>2</sup>
01	3531
02	1629
03	2021
04	1345
05	1428
06	1331
07	3303
08	2938
09	1361
10	1435
11	1511
12	1303
13	3950
TOTAL	27086

3rd FLOOR

TOWER A

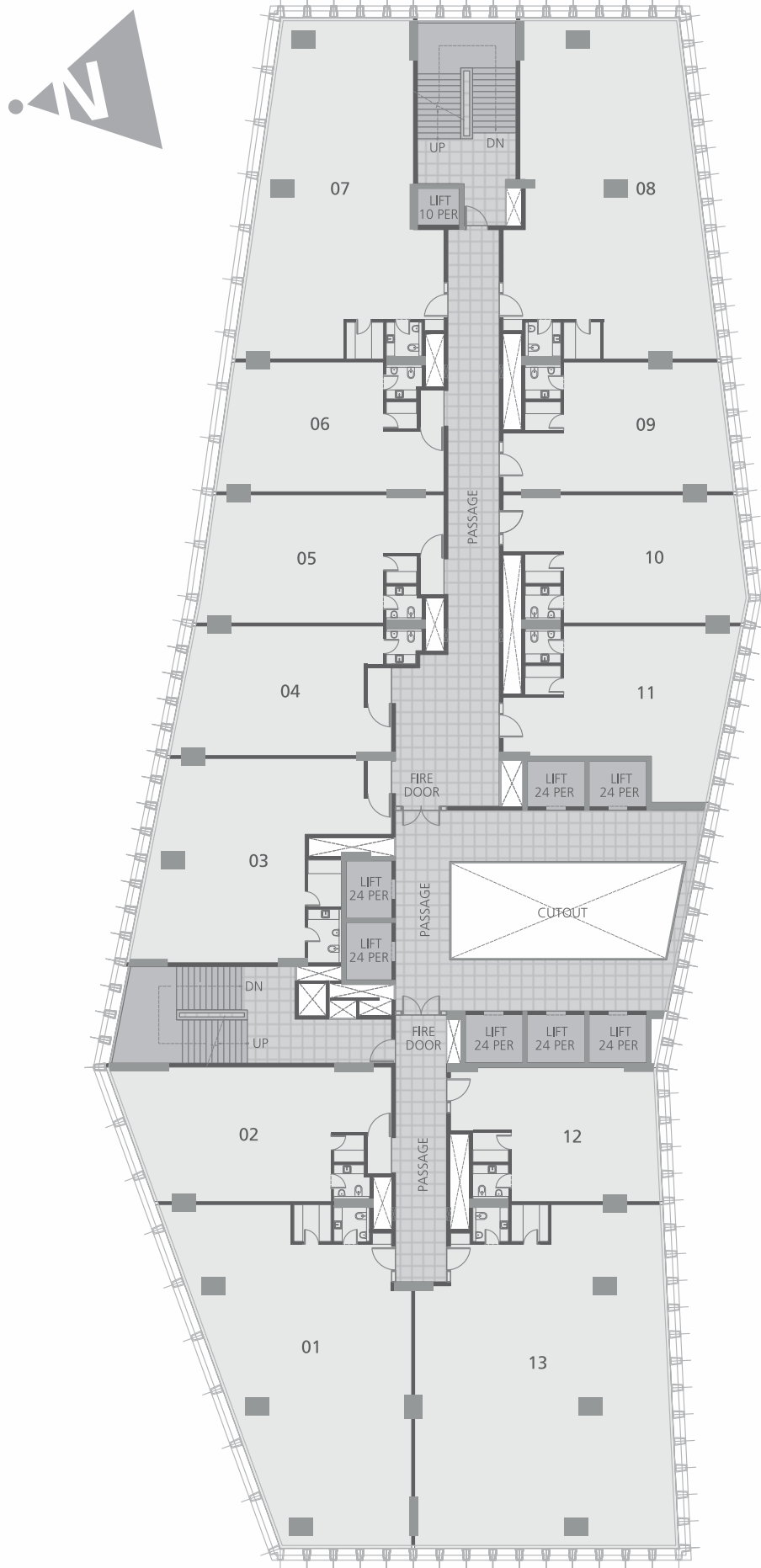


OFFICE NO.	S.B.A IN FT <sup>2</sup>
01	3395
02	1348
03	1923
04	1463
05	2269
06	2609
07	1234
08	1195
09	1869
10	1615
11	4015
TOTAL	22935

3rd FLOOR

TOWER B

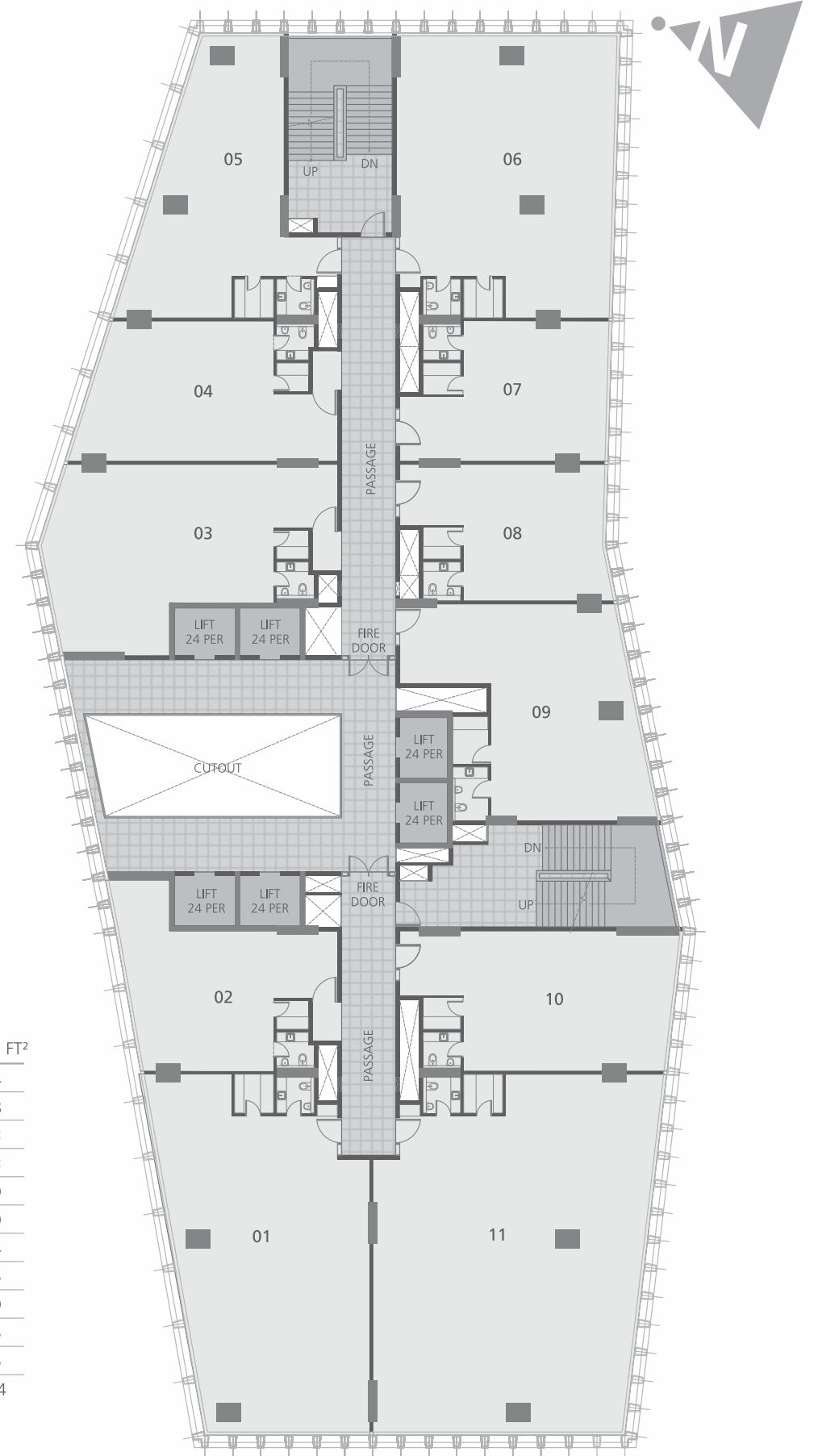
# FLOOR LAYOUT



OFFICE NO.	S.B.A IN FT <sup>2</sup>
01	3010
02	1629
03	2021
04	1345
05	1428
06	1331
07	2672
08	2938
09	1361
10	1435
11	1511
12	1303
13	3950
TOTAL	25934

4th & 6th, 8th FLOOR

# TOWER A

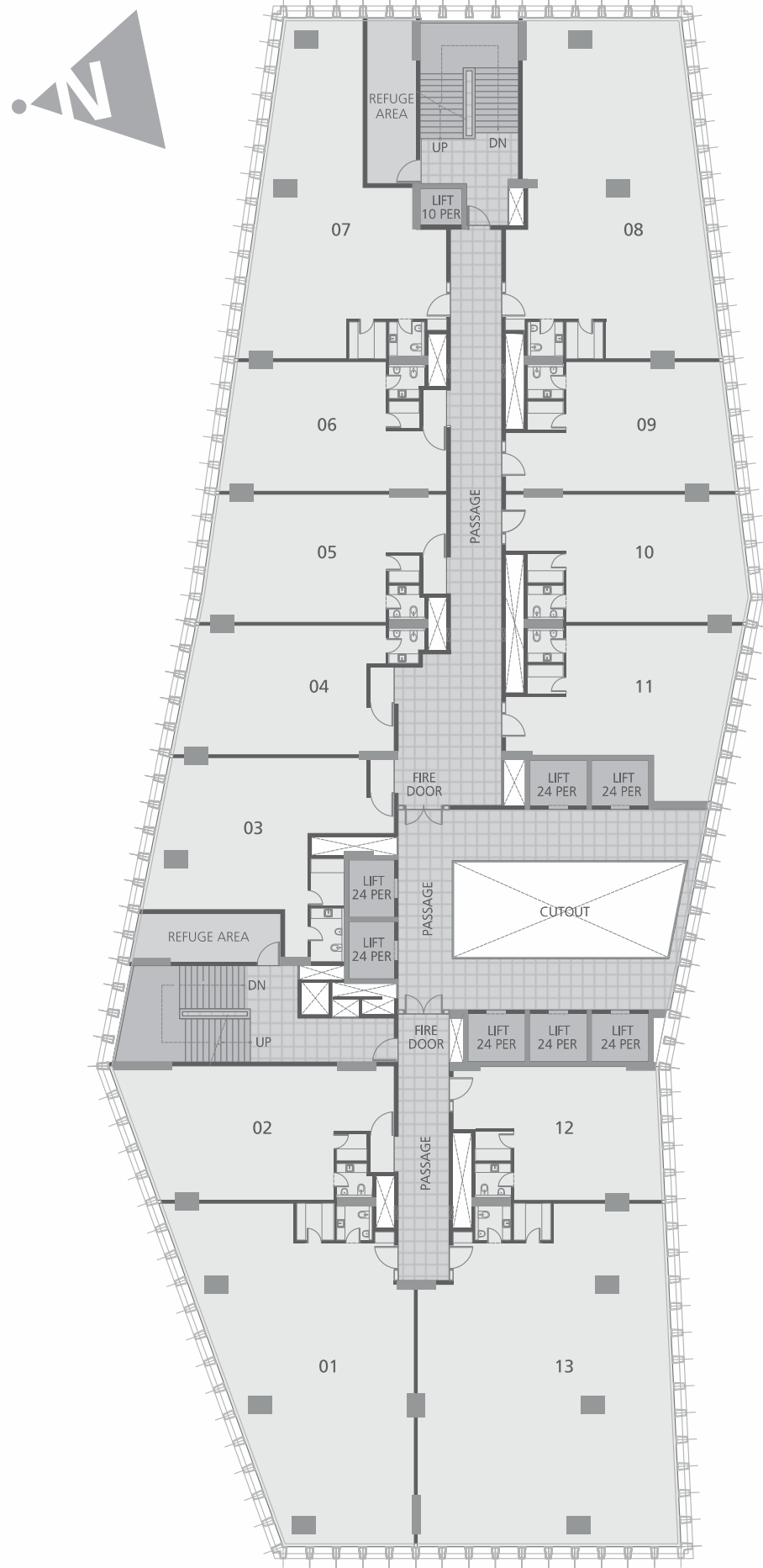


OFFICE NO.	S.B.A IN FT <sup>2</sup>
01	2854
02	1348
03	1923
04	1463
05	1719
06	2609
07	1234
08	1195
09	1869
10	1615
11	4015
TOTAL	21844

4th & 6th FLOOR

# TOWER B

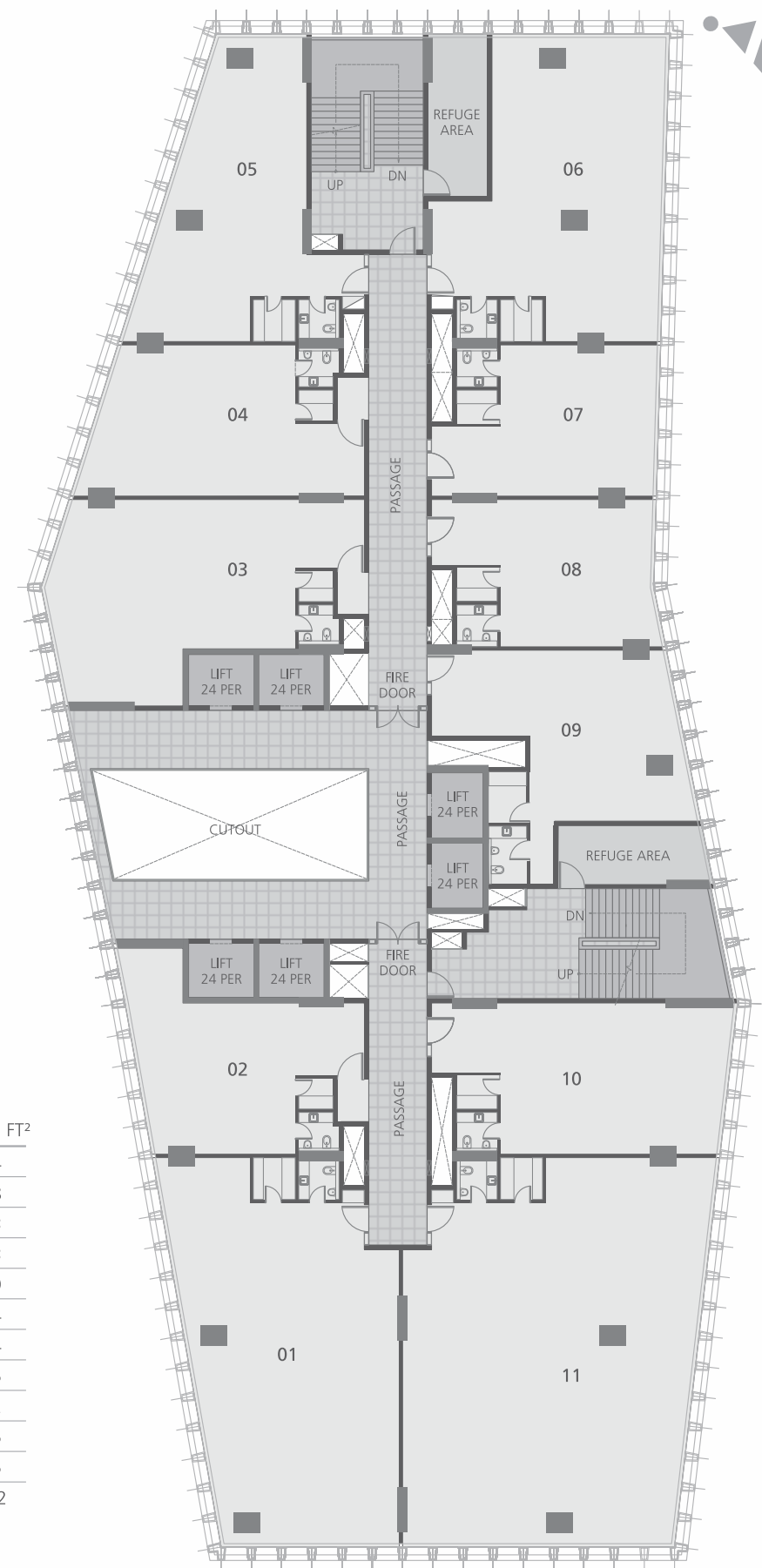
# FLOOR LAYOUT



OFFICE NO.	S.B.A IN FT <sup>2</sup>
01	3010
02	1629
03	1658
04	1345
05	1428
06	1331
07	2254
08	2938
09	1361
10	1435
11	1511
12	1303
13	3950
TOTAL	25153

5th & 7th FLOOR

# TOWER A

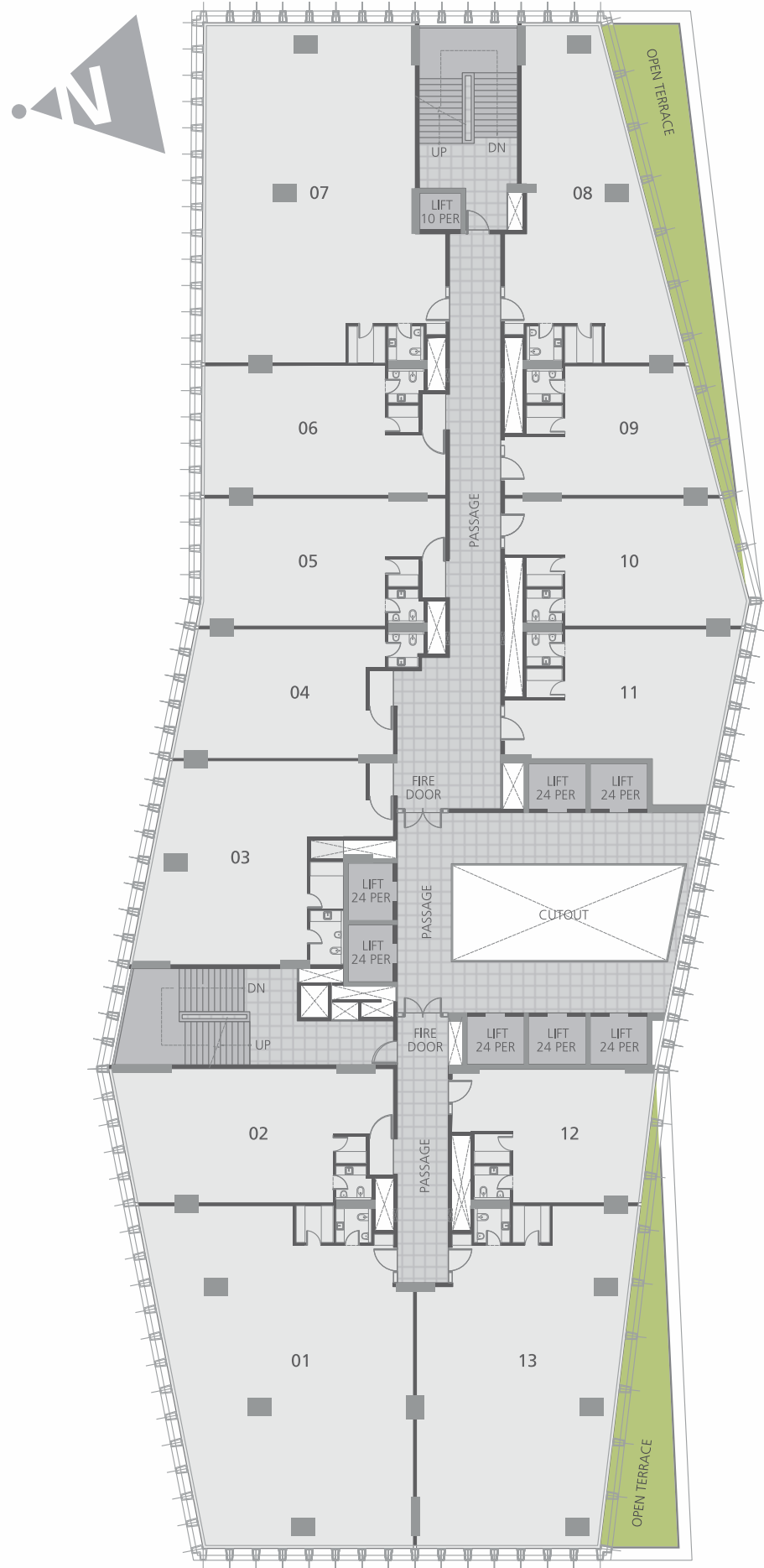


OFFICE NO.	S.B.A IN FT <sup>2</sup>
01	2854
02	1348
03	1923
04	1463
05	1719
06	2224
07	1234
08	1195
09	1522
10	1615
11	4015
TOTAL	21112

5th FLOOR

# TOWER B

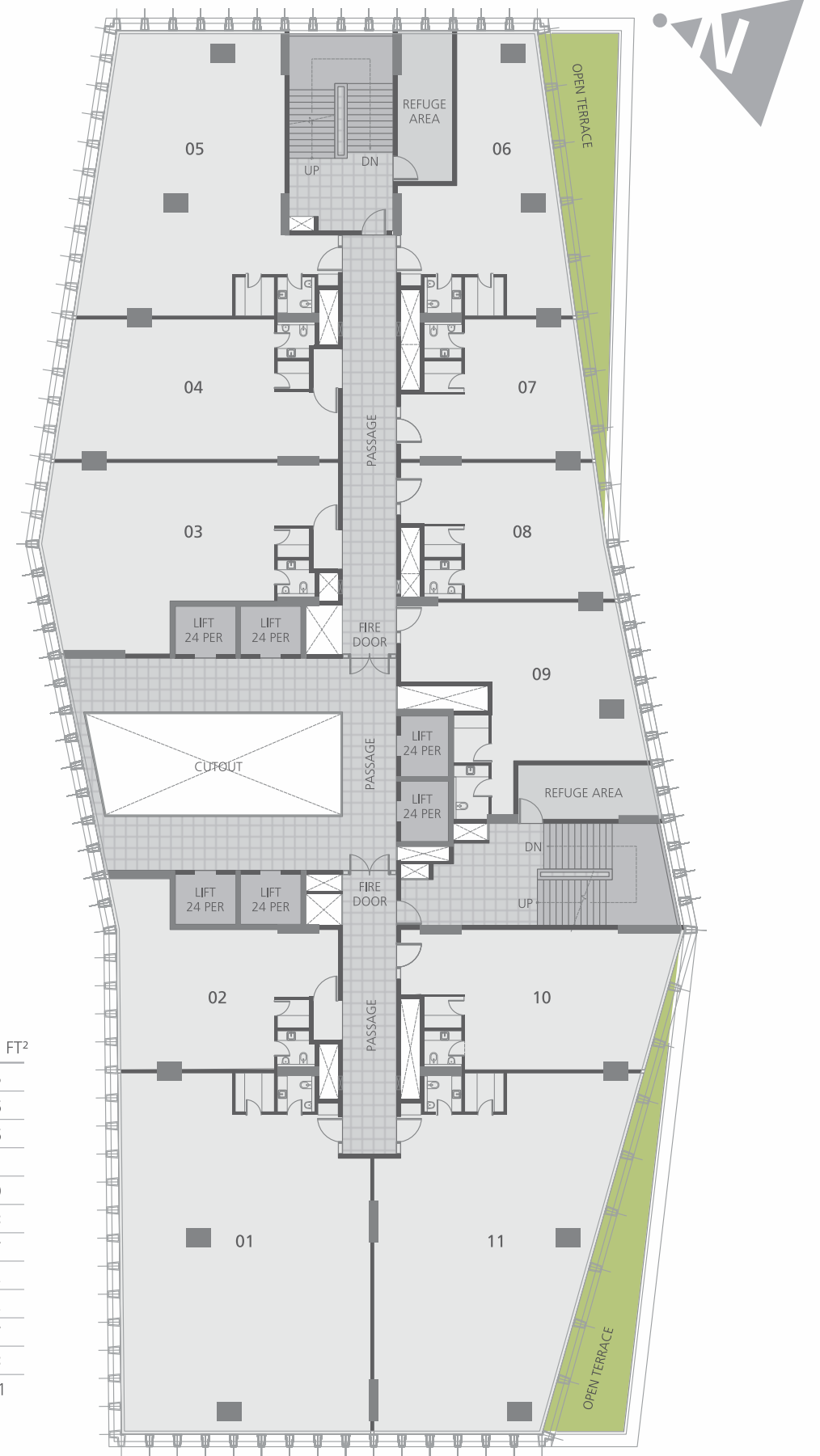
# FLOOR LAYOUT



OFFICE NO.	S.B.A IN FT <sup>2</sup>
01	3830
02	1699
03	2024
04	1349
05	1462
06	1473
07	3561
08	3059
09	1219
10	1401
11	1511
12	1234
13	3972
TOTAL	27794

10th FLOOR

TOWER A



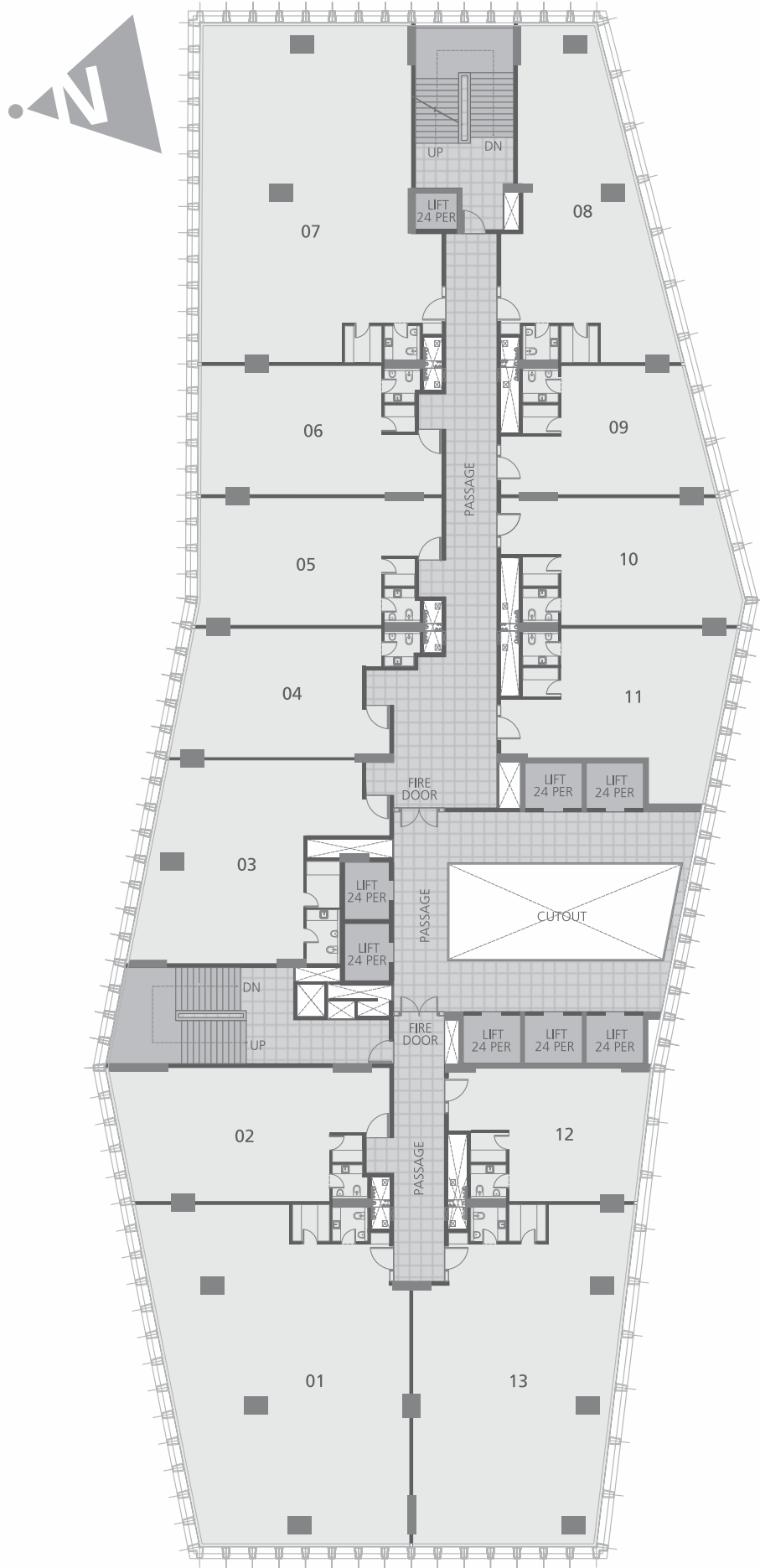
OFFICE NO.	S.B.A IN FT <sup>2</sup>
01	3665
02	1416
03	1946
04	1611
05	2439
06	1503
07	1087
08	1172
09	1522
10	1547
11	3203
TOTAL	21111

7th FLOOR

TOWER B



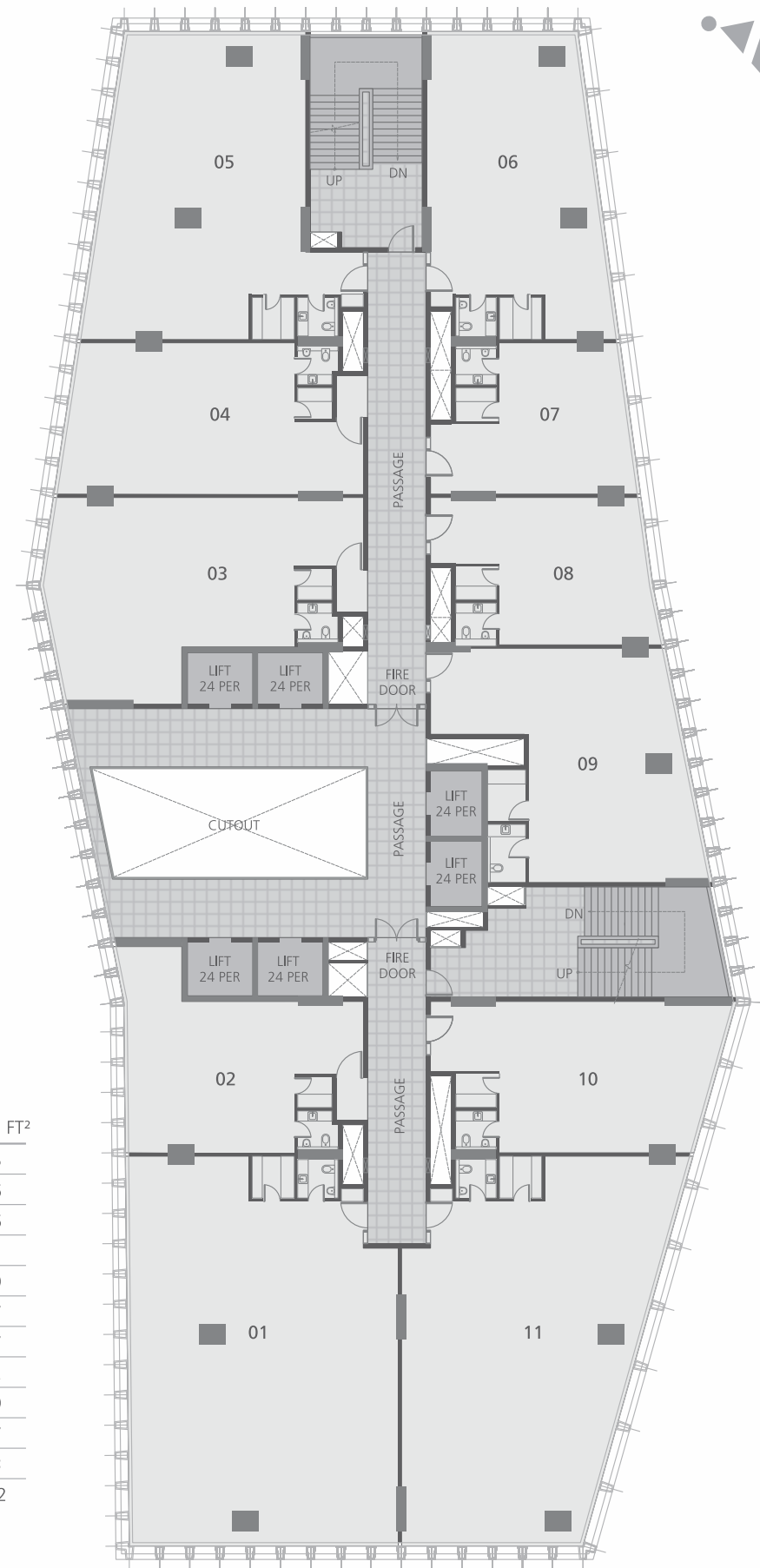
# FLOOR LAYOUT



OFFICE NO.	S.B.A IN FT <sup>2</sup>
01	3830
02	1699
03	2024
04	1349
05	1462
06	1473
07	3561
08	2049
09	1219
10	1401
11	1511
12	1234
13	3134
TOTAL	25946

11th & 13th FLOOR

# TOWER A

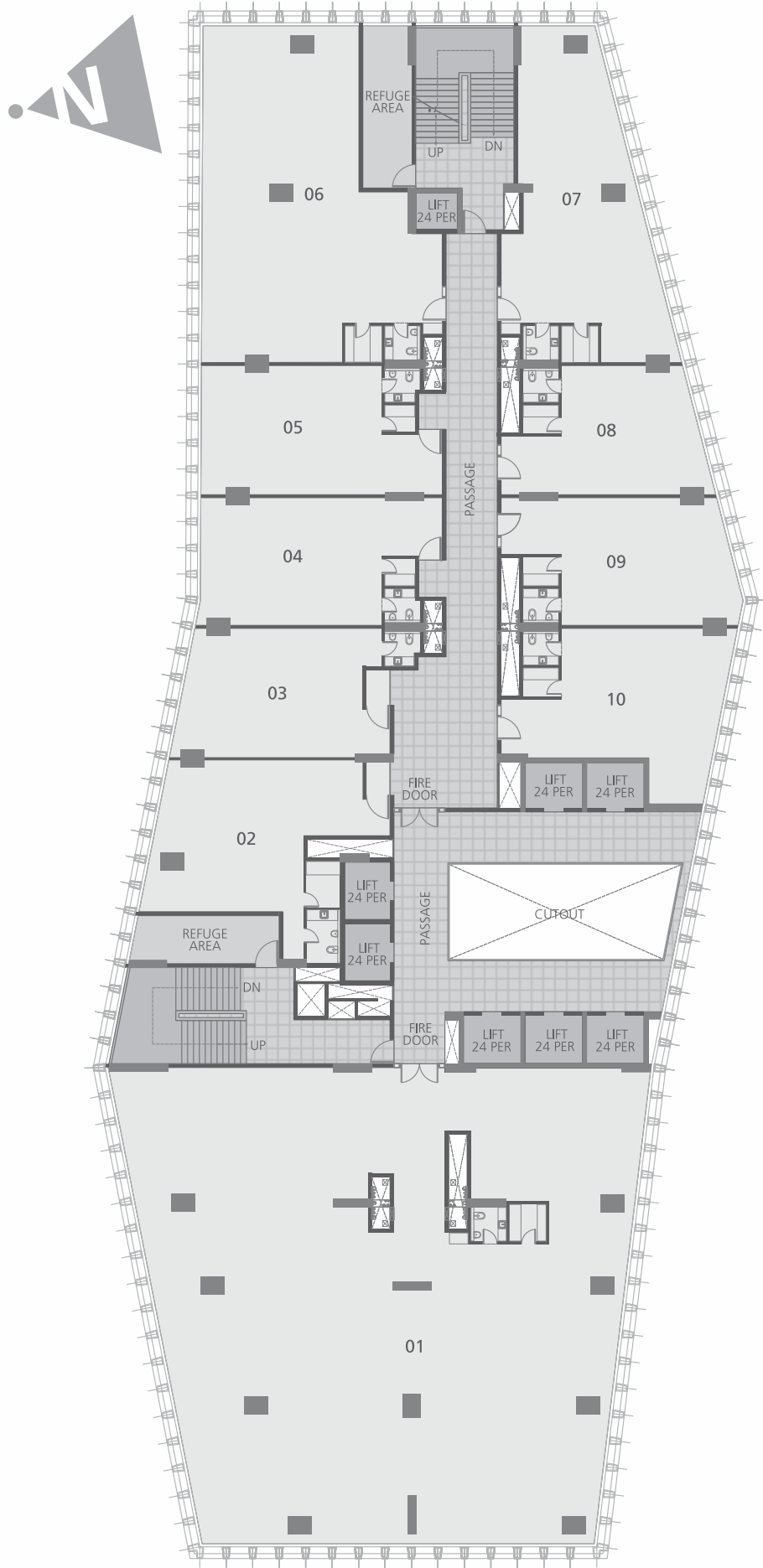


OFFICE NO.	S.B.A IN FT <sup>2</sup>
01	3665
02	1416
03	1946
04	1611
05	2439
06	1887
07	1087
08	1172
09	1869
10	1547
11	3203
TOTAL	21842

8th, 10th, 11th & 13th FLOOR

# TOWER B

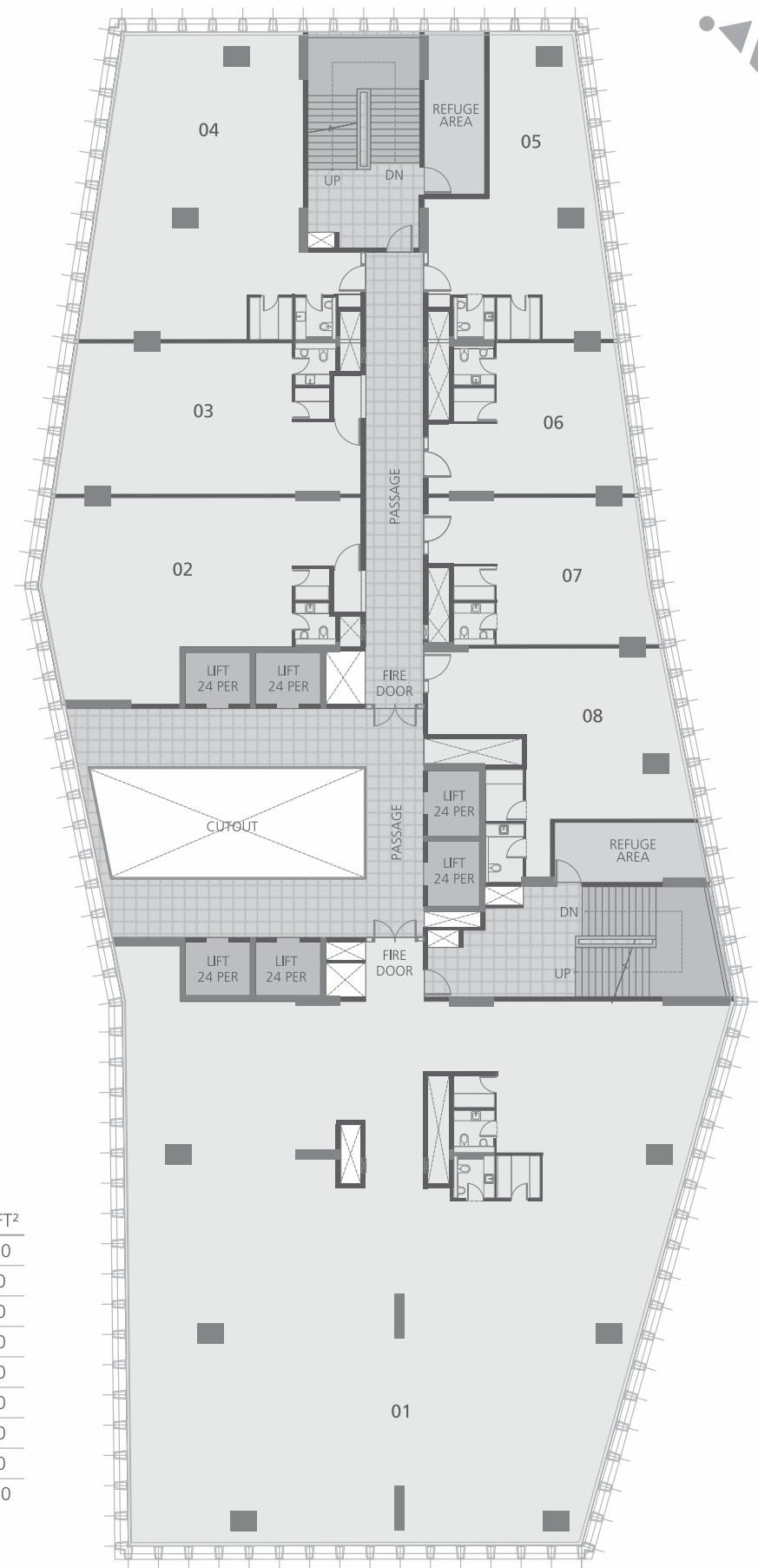
# FLOOR LAYOUT



OFFICE NO.	S.B.A IN FT <sup>2</sup>
01	10583
02	1656
03	1349
04	1462
05	1473
06	3143
07	2049
08	1219
09	1401
10	1511
TOTAL	25846

12th FLOOR

TOWER A

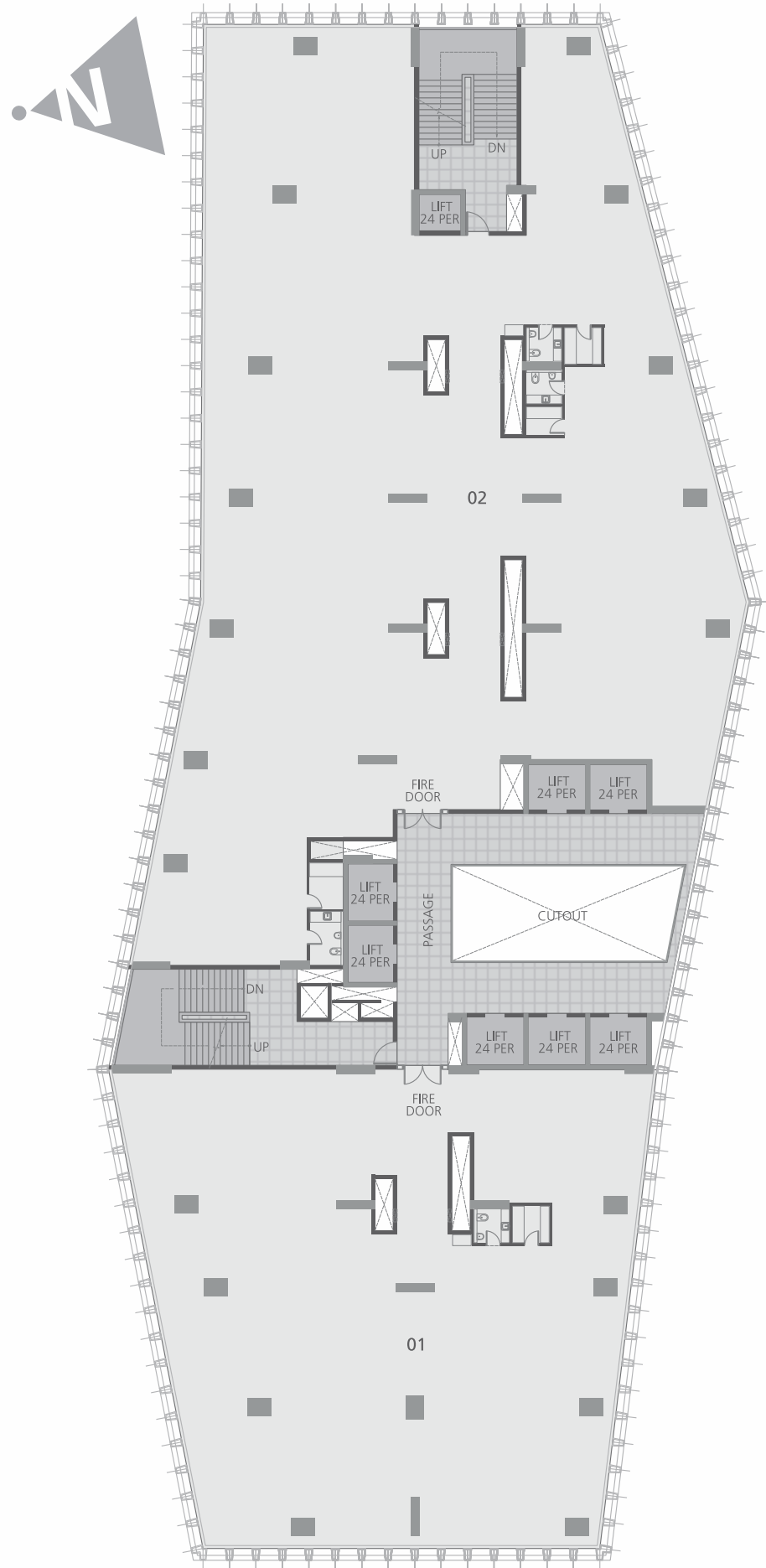


OFFICE NO.	S.B.A IN FT <sup>2</sup>
01	10645.00
02	1946.00
03	1611.00
04	2439.00
05	1503.00
06	1087.00
07	1172.00
08	1522.00
TOTAL	21925.00

12h FLOOR

TOWER B

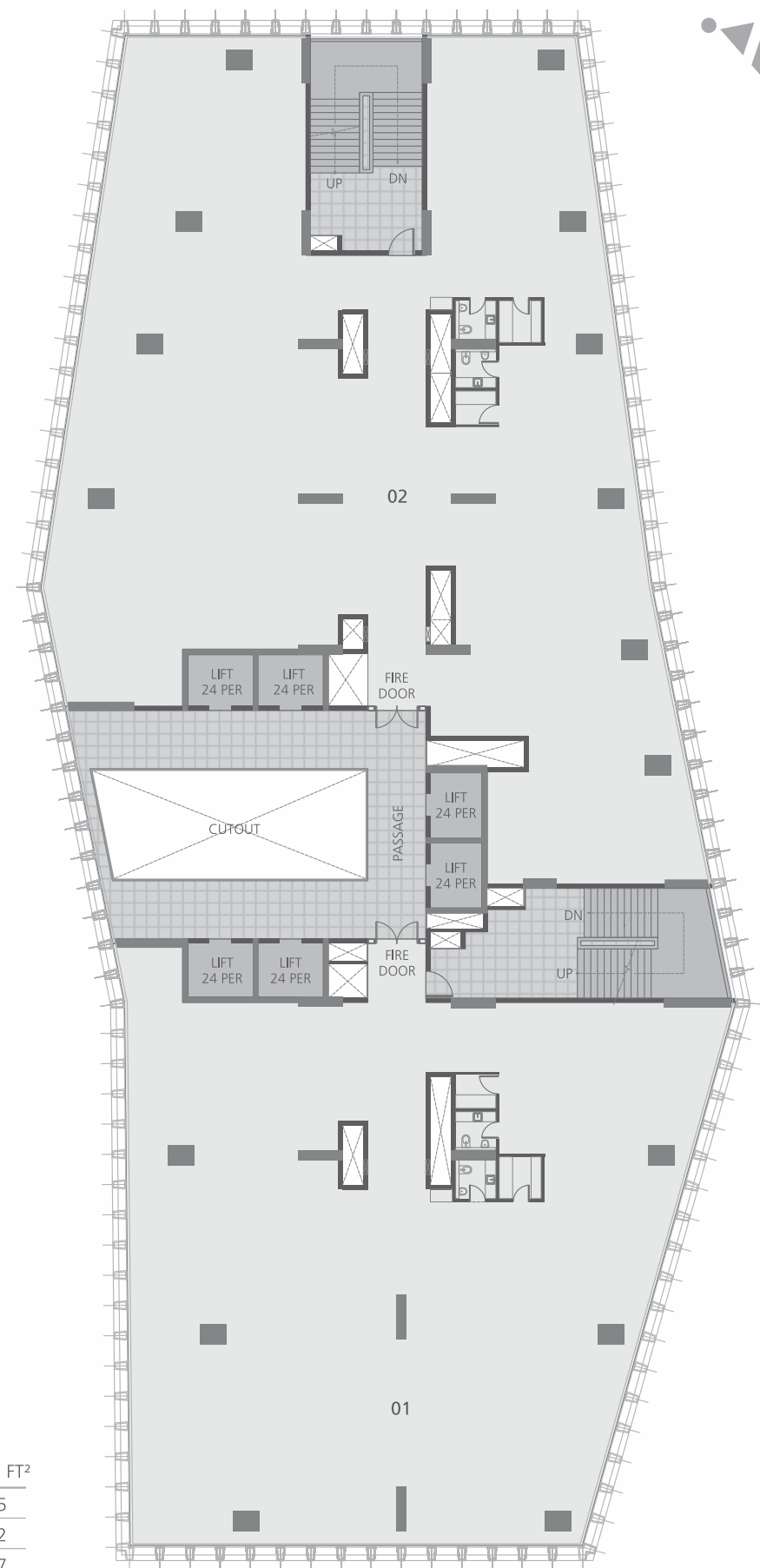
# FLOOR LAYOUT



OFFICE NO.	S.B.A IN FT <sup>2</sup>
01	10583
02	18176
TOTAL	28759

14th, 16th  
& 17th FLOOR

## TOWER A

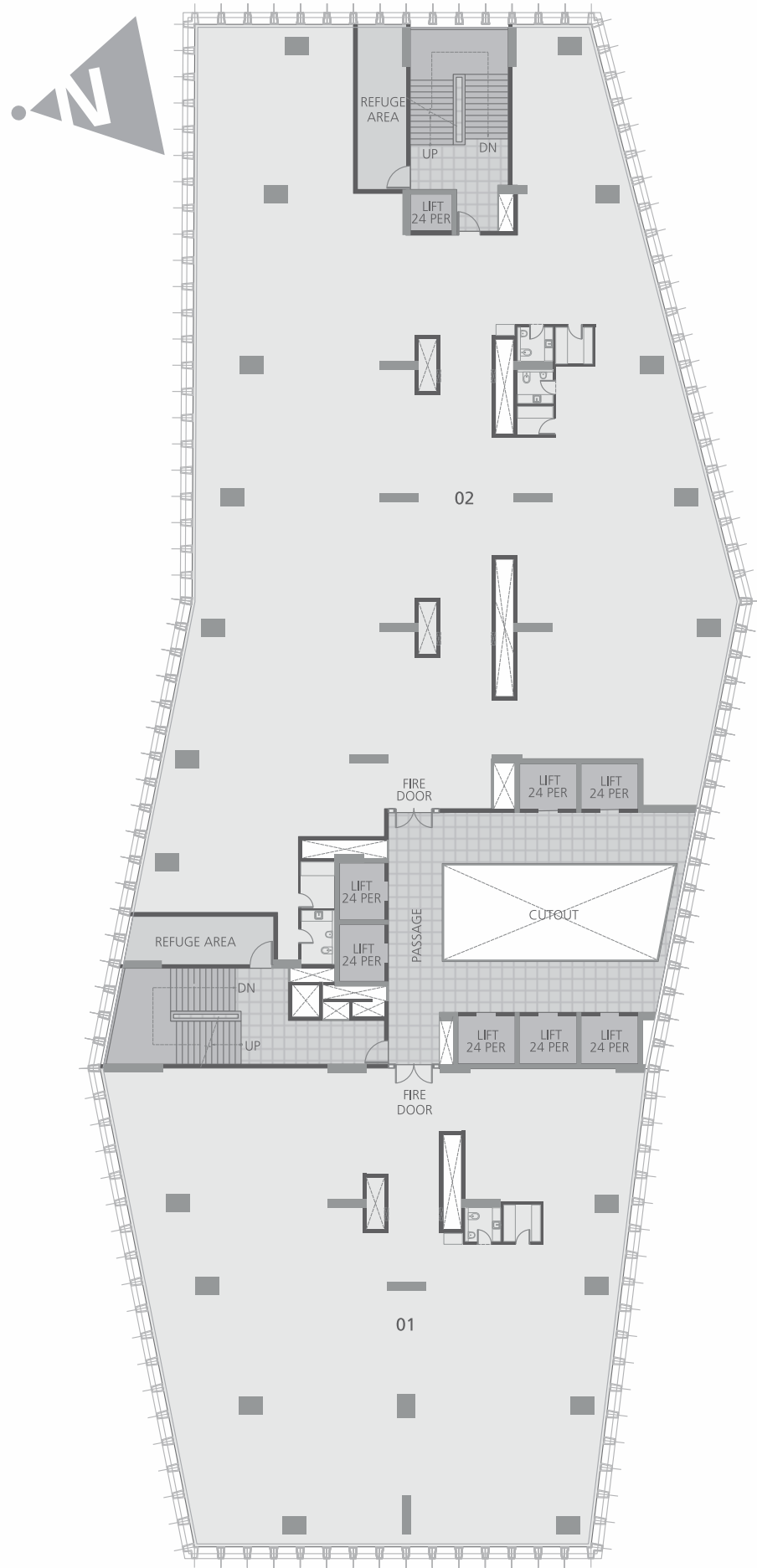


OFFICE NO.	S.B.A IN FT <sup>2</sup>
01	10645
02	13212
TOTAL	23857

14th, 16th  
& 17th FLOOR

## TOWER B

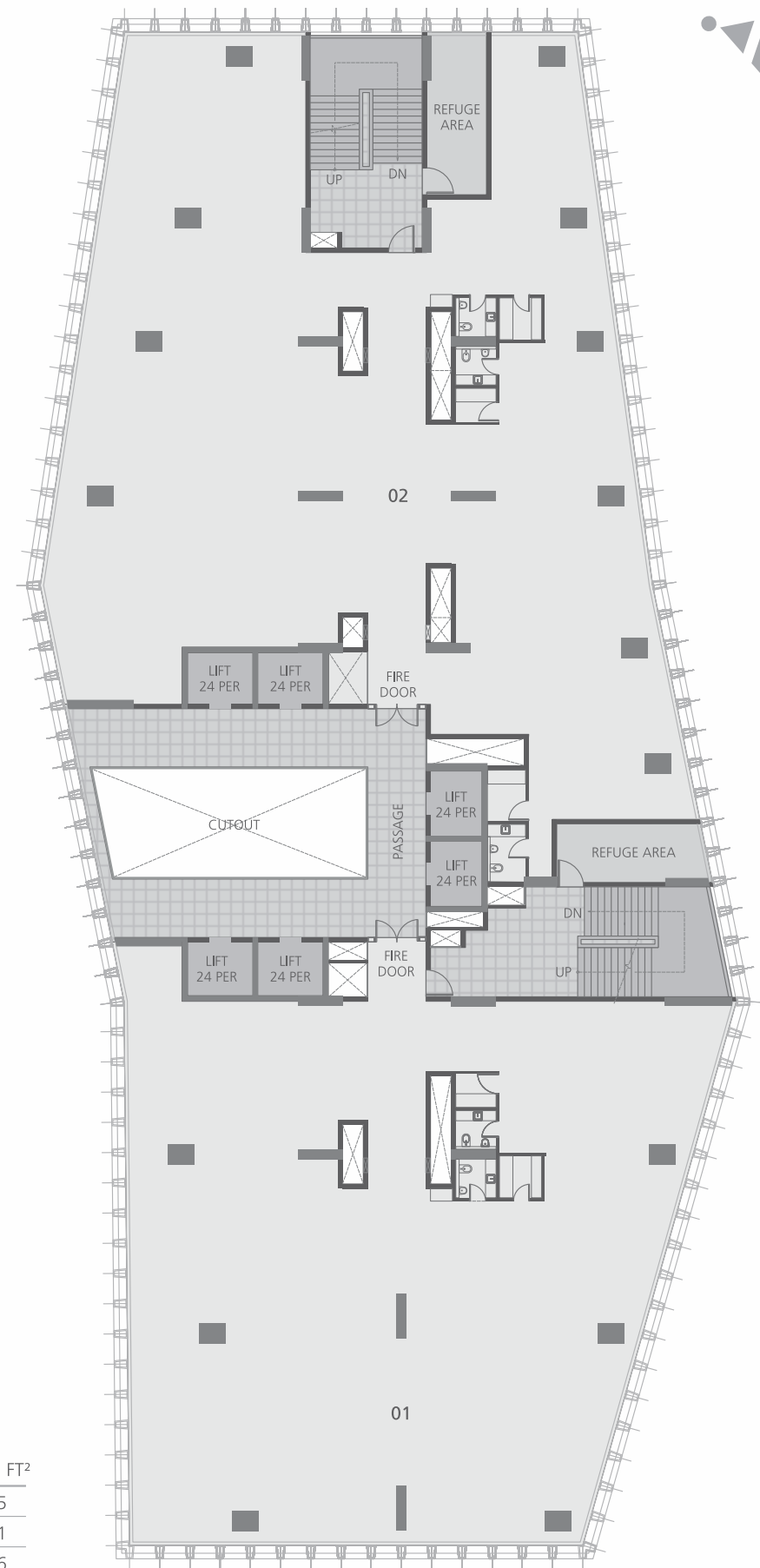
# FLOOR LAYOUT



OFFICE NO.	S.B.A IN FT <sup>2</sup>
01	10583
02	17393
TOTAL	27976

15th FLOOR

# TOWER A



OFFICE NO.	S.B.A IN FT <sup>2</sup>
01	10645
02	12481
TOTAL	23126

15th FLOOR

# TOWER B