

**Office Space for Pre-Leased  
In Shilp Corporate Park  
@ Rajpath Rangoli Road, Thaltej, Ahmedabad**

**Manage By**



**Gujarat Rera Reg No. AG/GJ/AHMEDABAD/AHMEDABAD  
CITY/AUDA/AA00067/310822R1**

**Office Address: B-210, Titanium City Centre, 100  
Feet Rd, Near Sachin Tower, Satellite,  
Ahmedabad, Gujarat 380015**

**(M): [090672 31161](tel:09067231161)**

**(E): [info@bquickproperty.com](mailto:info@bquickproperty.com)**

**(W): [www.bquickproperty.com](http://www.bquickproperty.com)**



**SHILP**<sup>®</sup>  
CORPORATE PARK

CREATING  
CORPORATE  
CULTURES



# SHILP<sup>®</sup>

CORPORATE PARK

CREATING  
CORPORATE  
CULTURES



welcome to  
the dawn of a new  
corporate culture

A CULTURE THAT ENHANCES  
**TIME**

A design that respects time.  
At Shilp Corporate Park we have mindfully designed an ecosystem that saves time. From a clean layout that has a seamless vehicular movement to ample elevators that makes sure there is minimum waiting time to separate service entries & elevators every aspect is taken care to respect your time. Finally time is money!

**SHILP**<sup>®</sup>  
CORPORATE PARK  
CREATING  
CORPORATE  
CULTURES





# PRODUCTIVITY

A design that elevates productivity  
We design spaces that are open and with ample light and ventilation.  
The design of the spaces are thoughtful without  
any hindrance of columns allowing for complete customization of  
spaces as per your taste and requirement.  
Finally we want you to get most out of your investment!

**SHILP**<sup>®</sup>  
CORPORATE PARK  
CREATING  
CORPORATE  
CULTURES

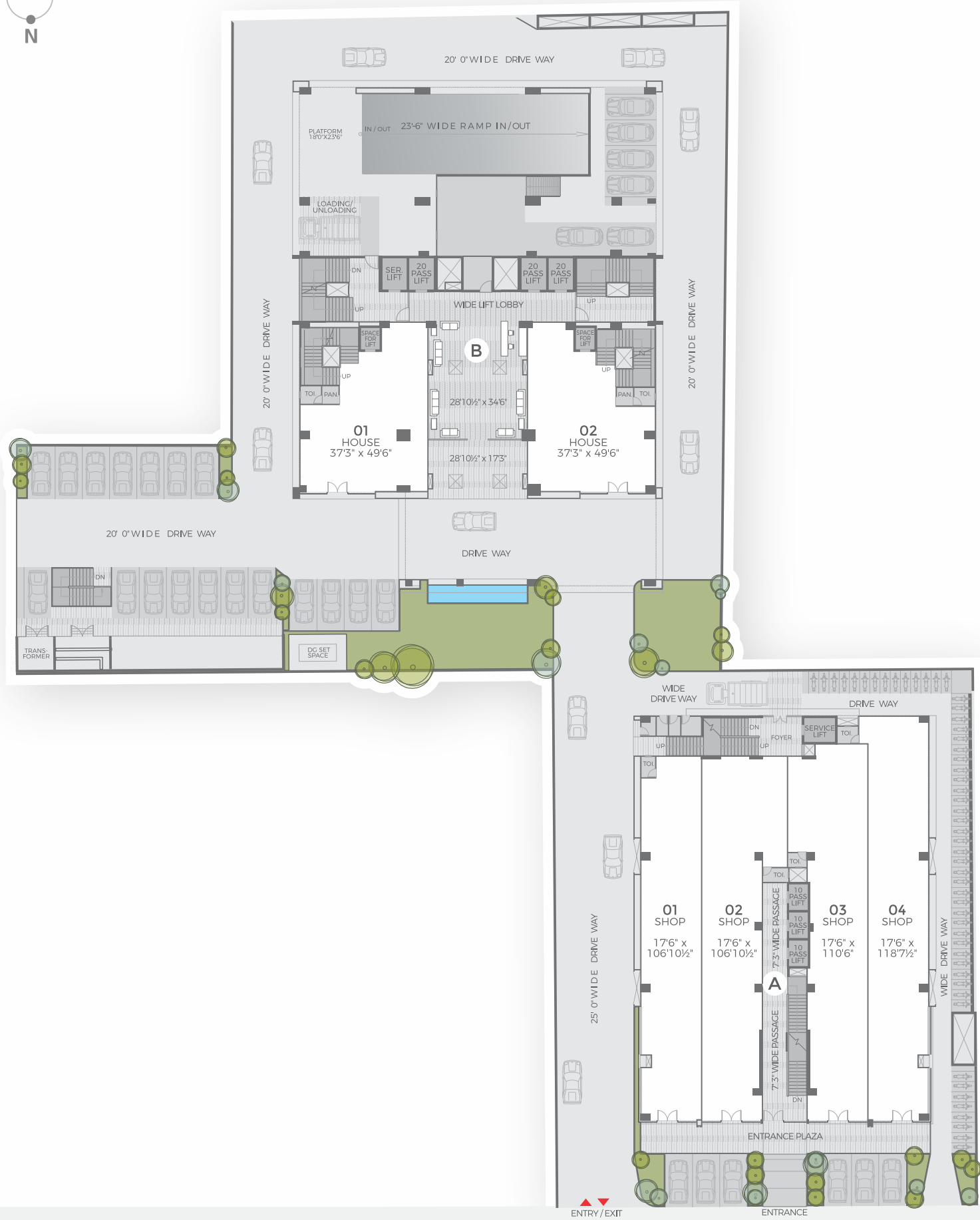
# CONNECTIVITY

a design that values connectivity  
Shilp Corporate Park not only located centrally for ease of connectivity to reach and access but the design also takes care of all the utilities that keeps you connected to the world. All internet utilities are carefully thought through and the ducts are defined for service and maintenance. Finally we want you to be connected not only physically but virtually!

**SHILP**<sup>®</sup>  
CORPORATE PARK  
CREATING  
CORPORATE  
CULTURES

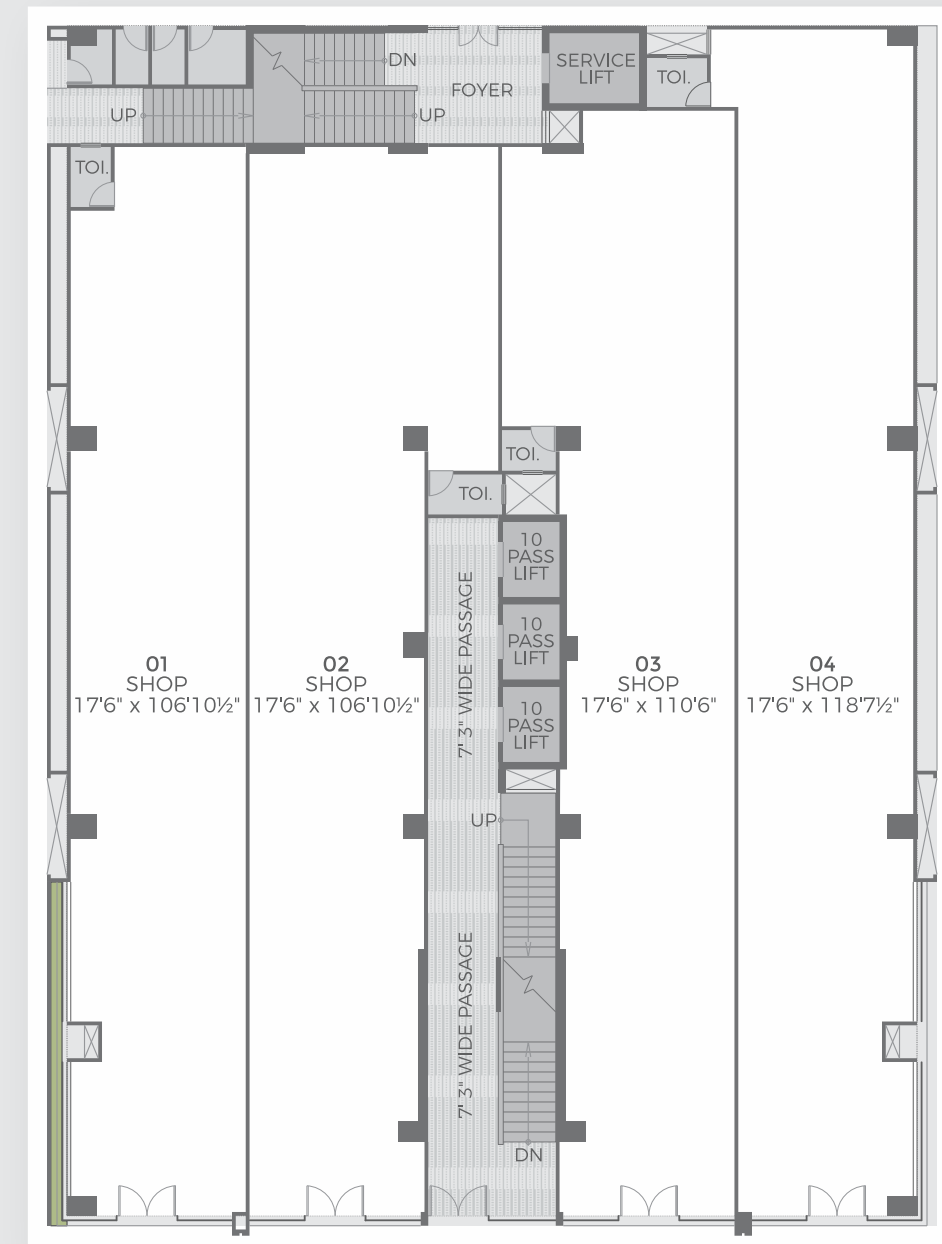
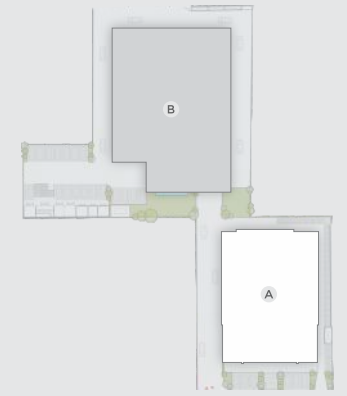


# GROUND FLOOR PLAN



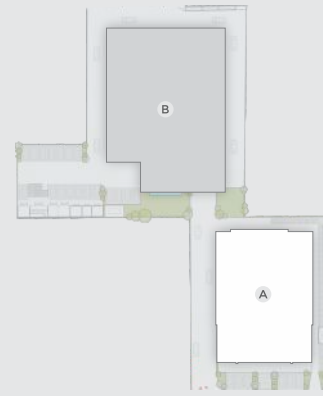
30.00 MT WIDE ROAD

# TOWER - A GROUND FLOOR PLAN



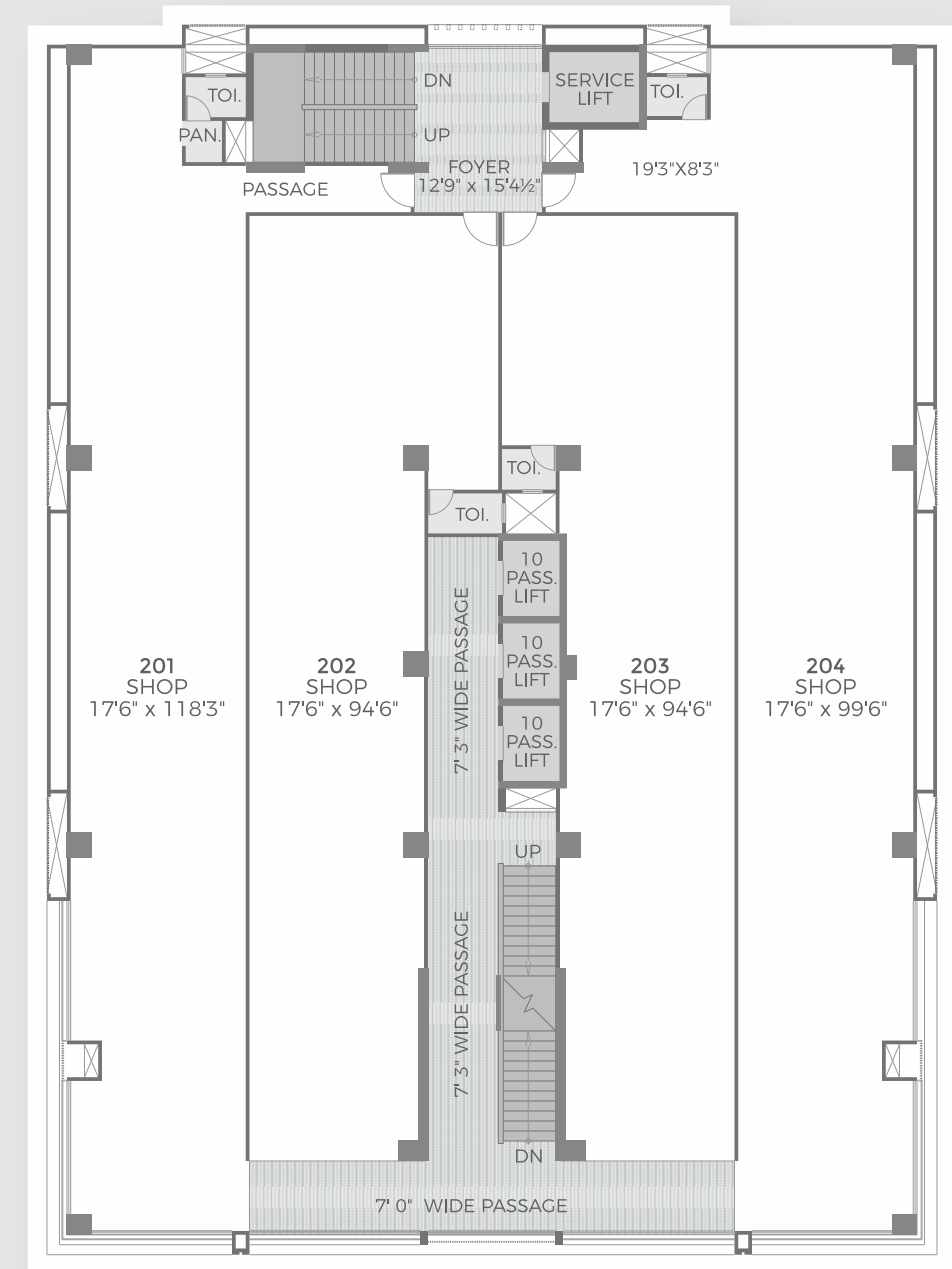
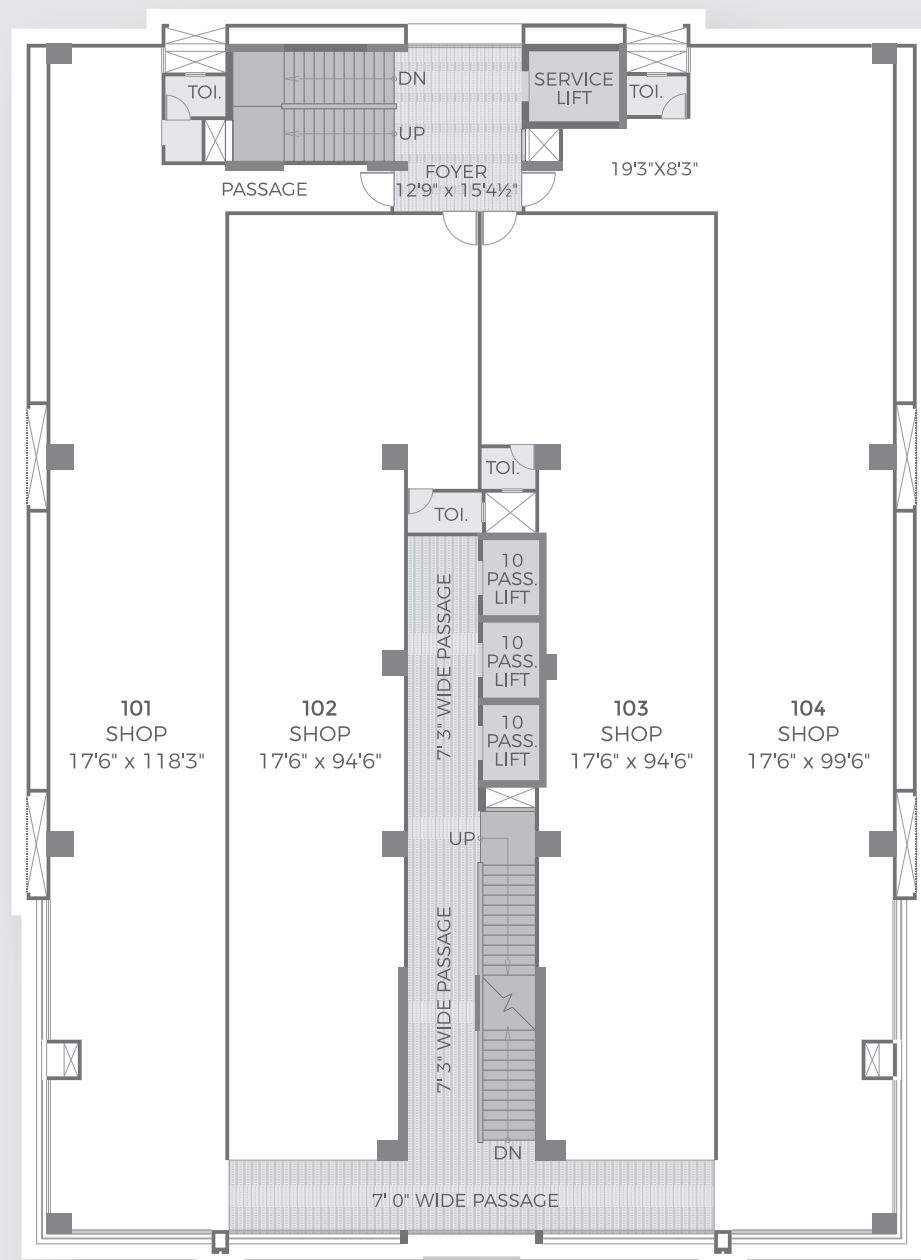
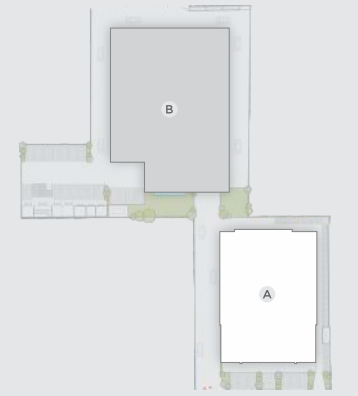
# TOWER - A

## 1st FLOOR PLAN



# TOWER - A

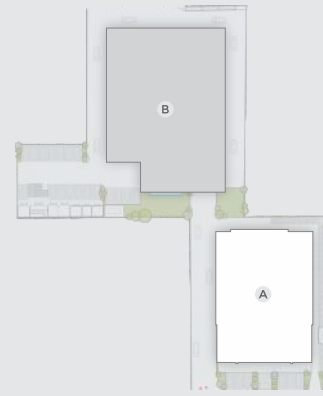
## 2nd & 3rd FLOOR PLAN





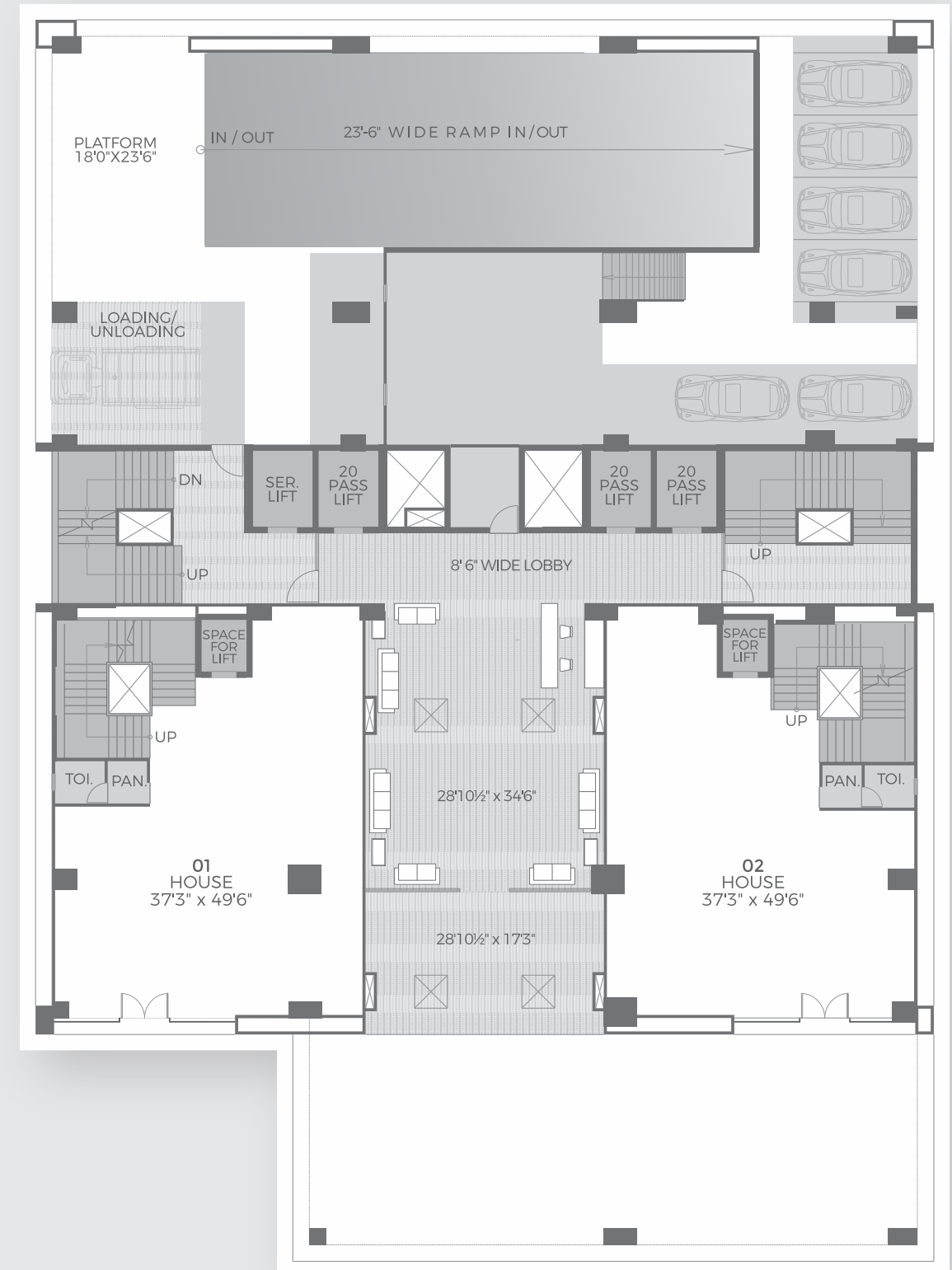
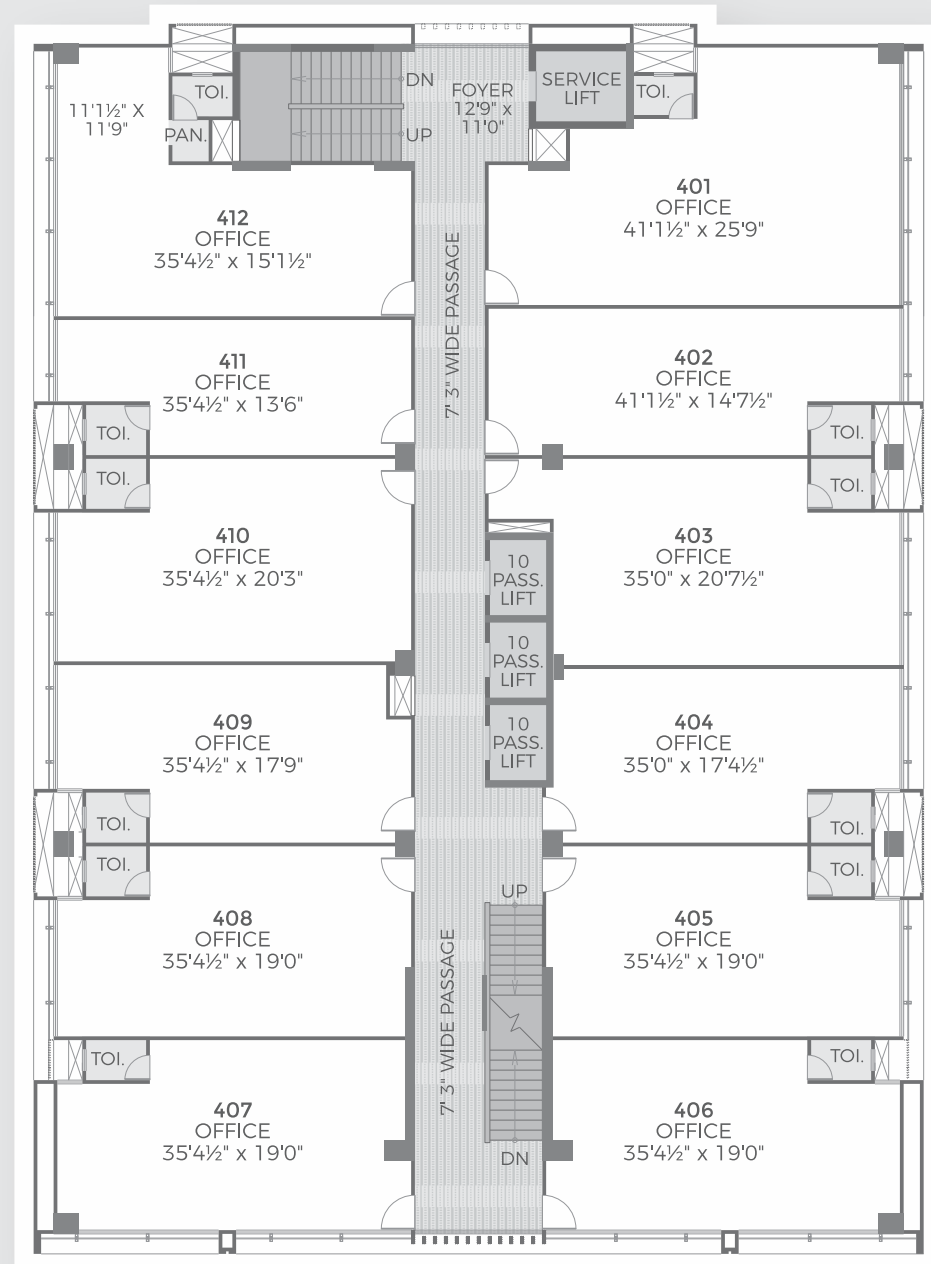
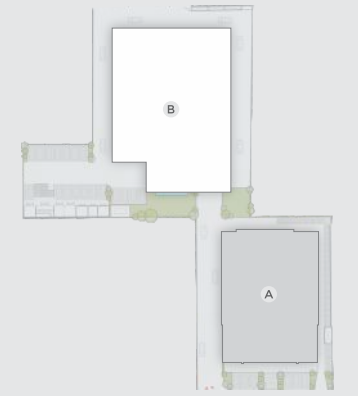
# TOWER - A

4th TO 6th  
FLOOR PLAN



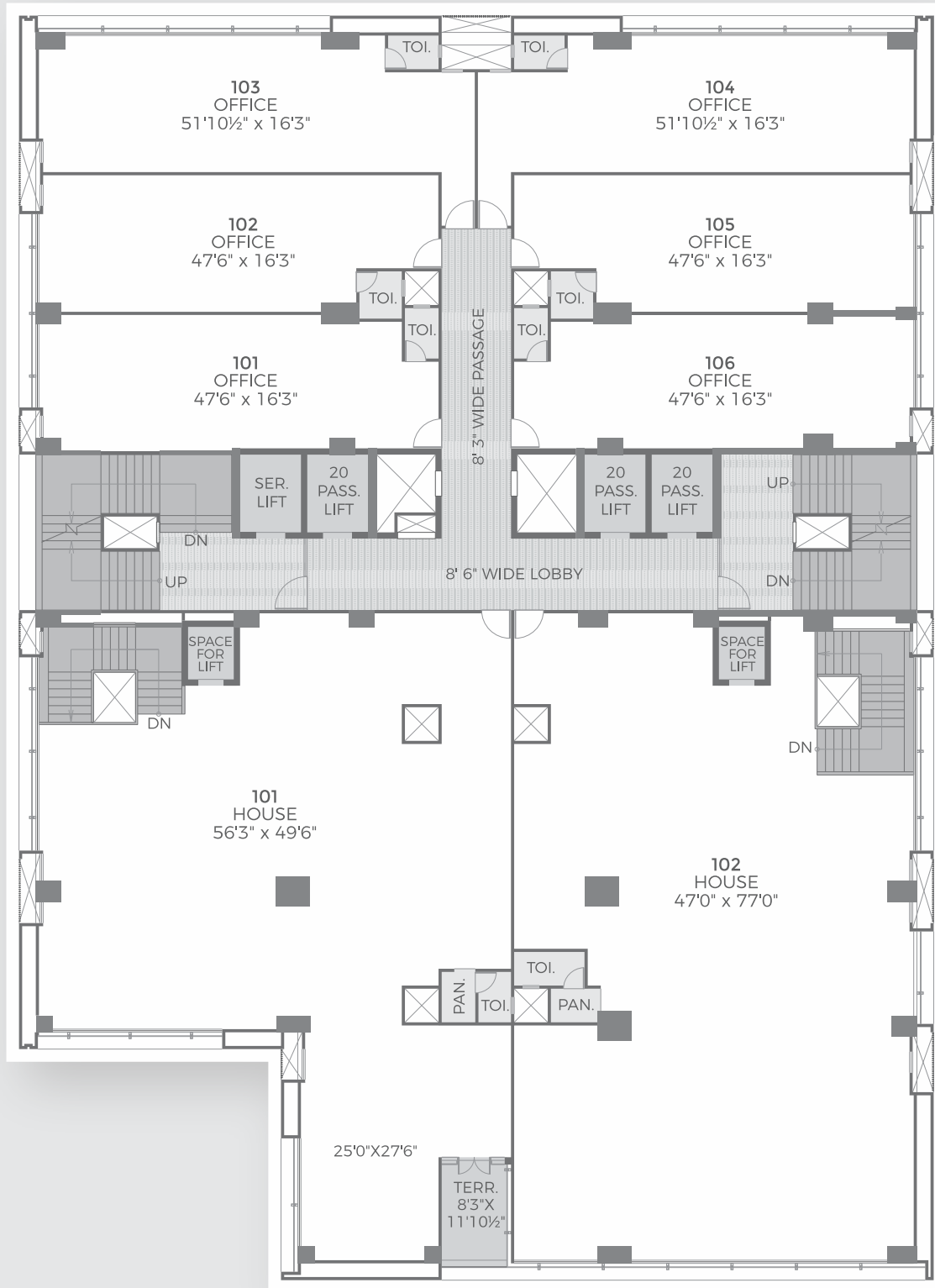
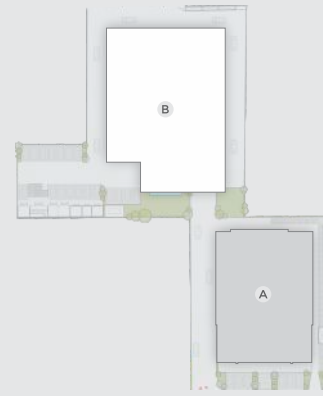
# TOWER - B

GROUND  
FLOOR PLAN



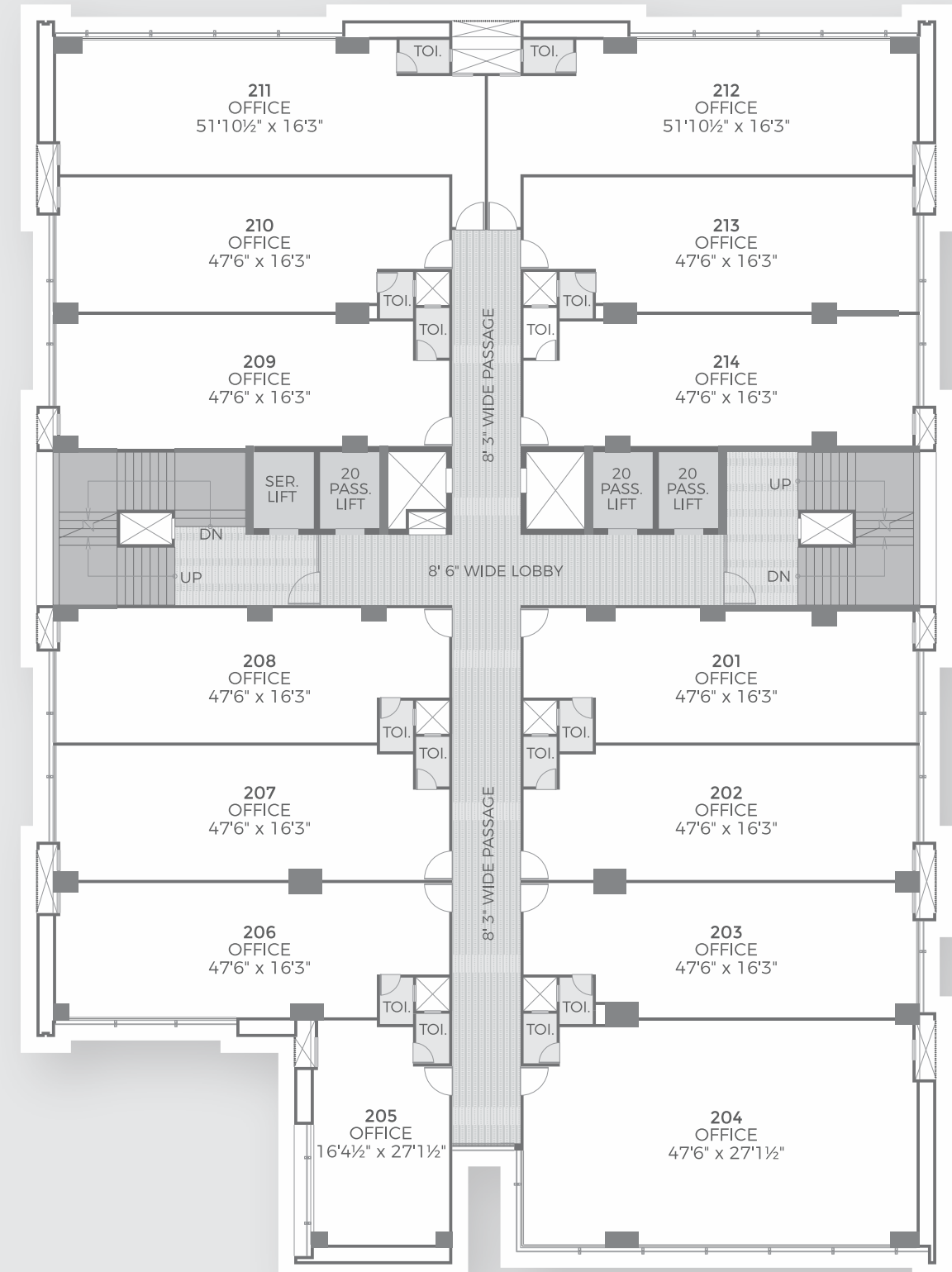
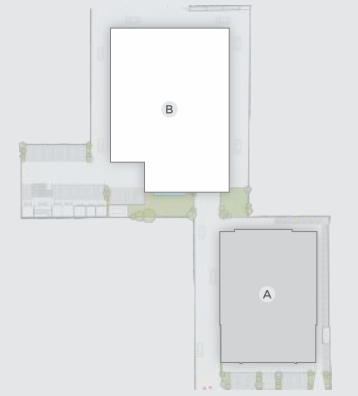
# TOWER - B

## 1st FLOOR PLAN



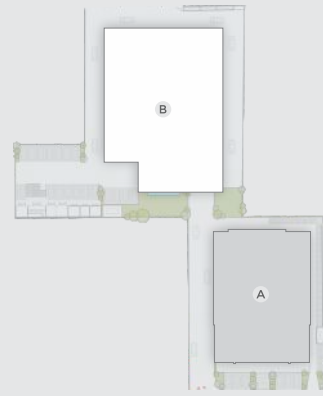
# TOWER - B

## 2nd & 3rd FLOOR PLAN



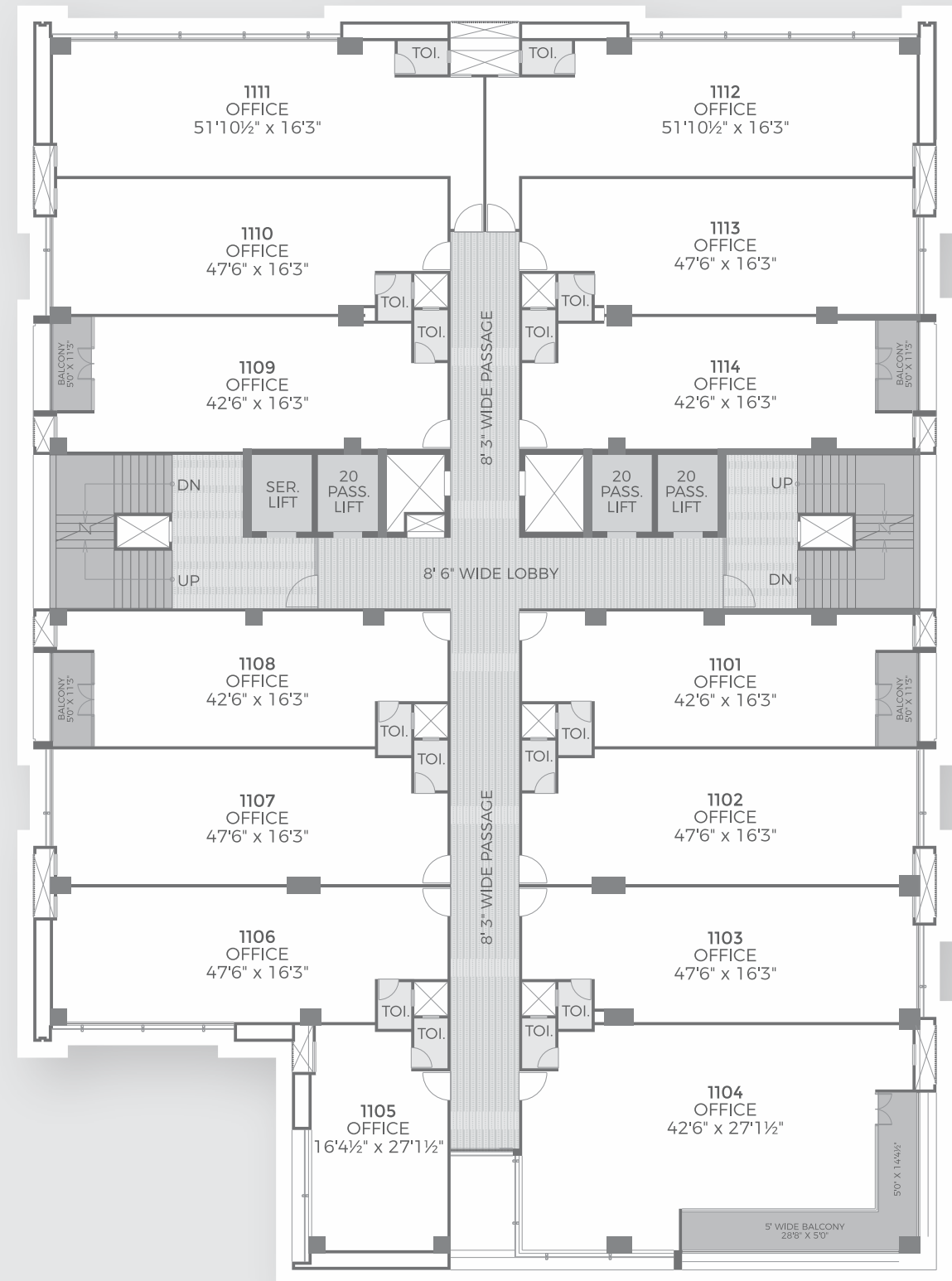
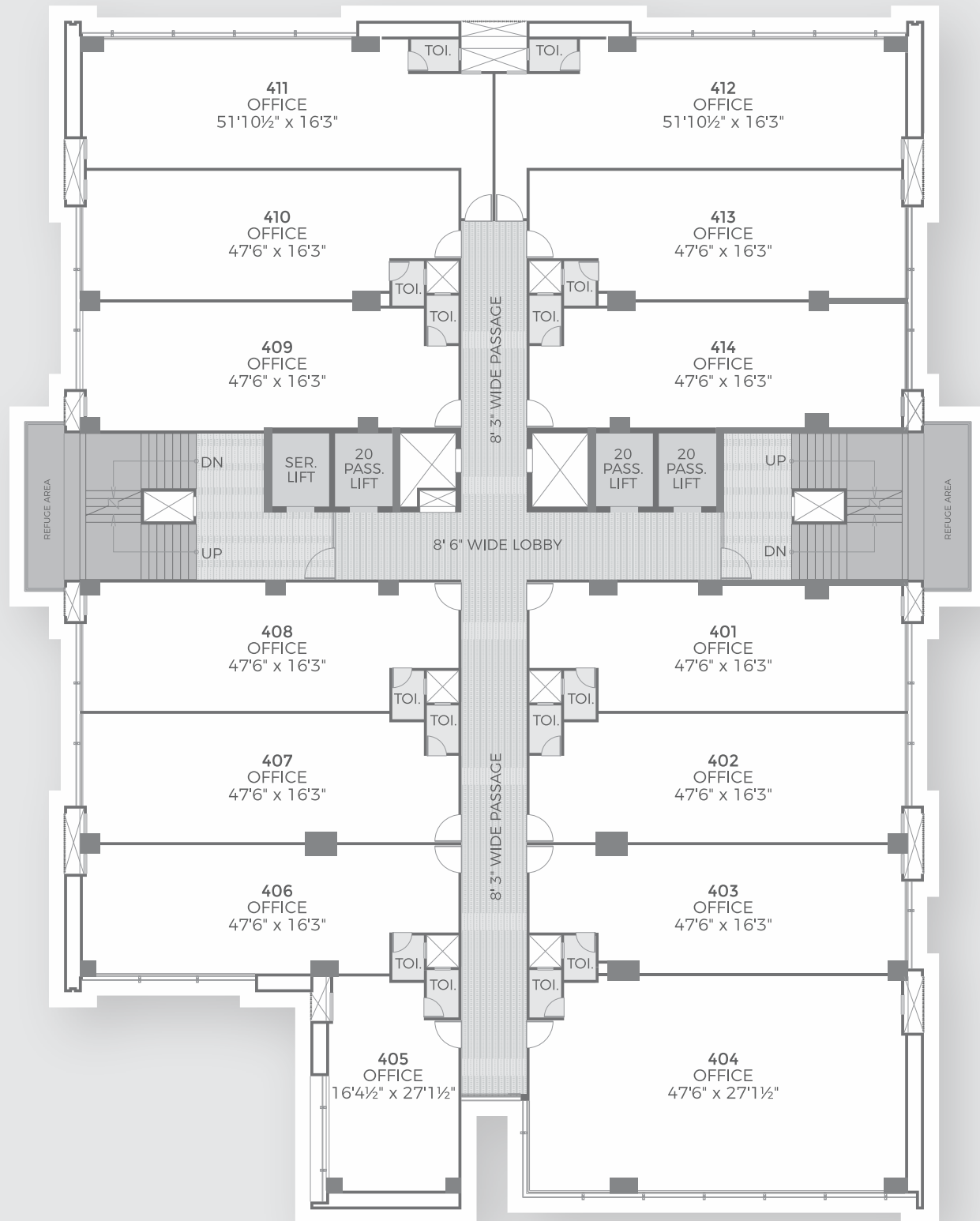
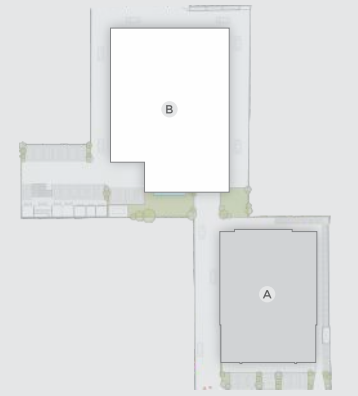
# TOWER - B

4th TO 10th & 12th  
FLOOR PLAN



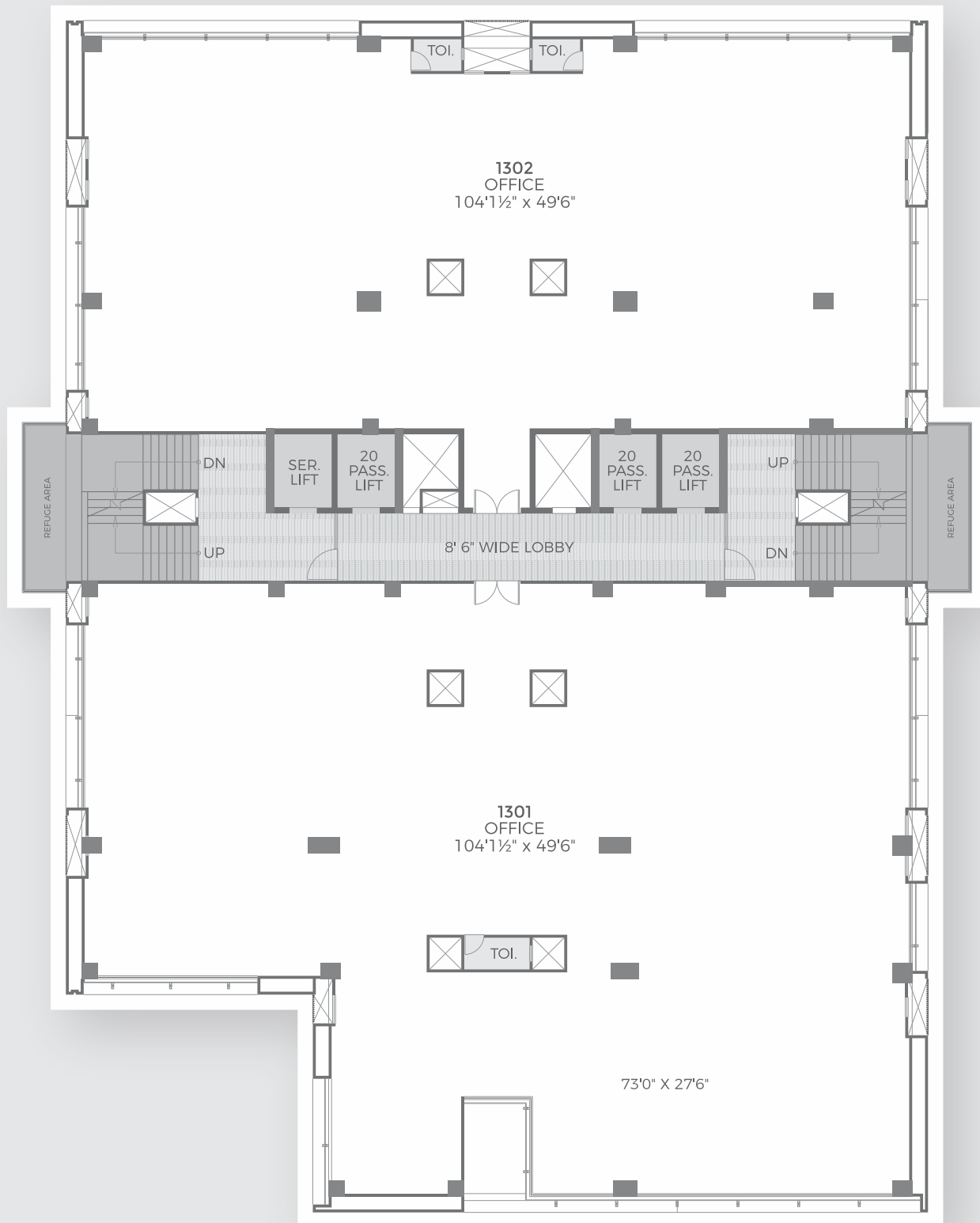
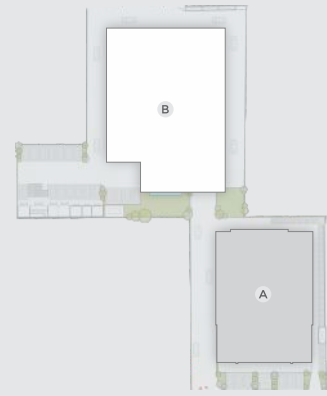
# TOWER - B

11th  
FLOOR PLAN



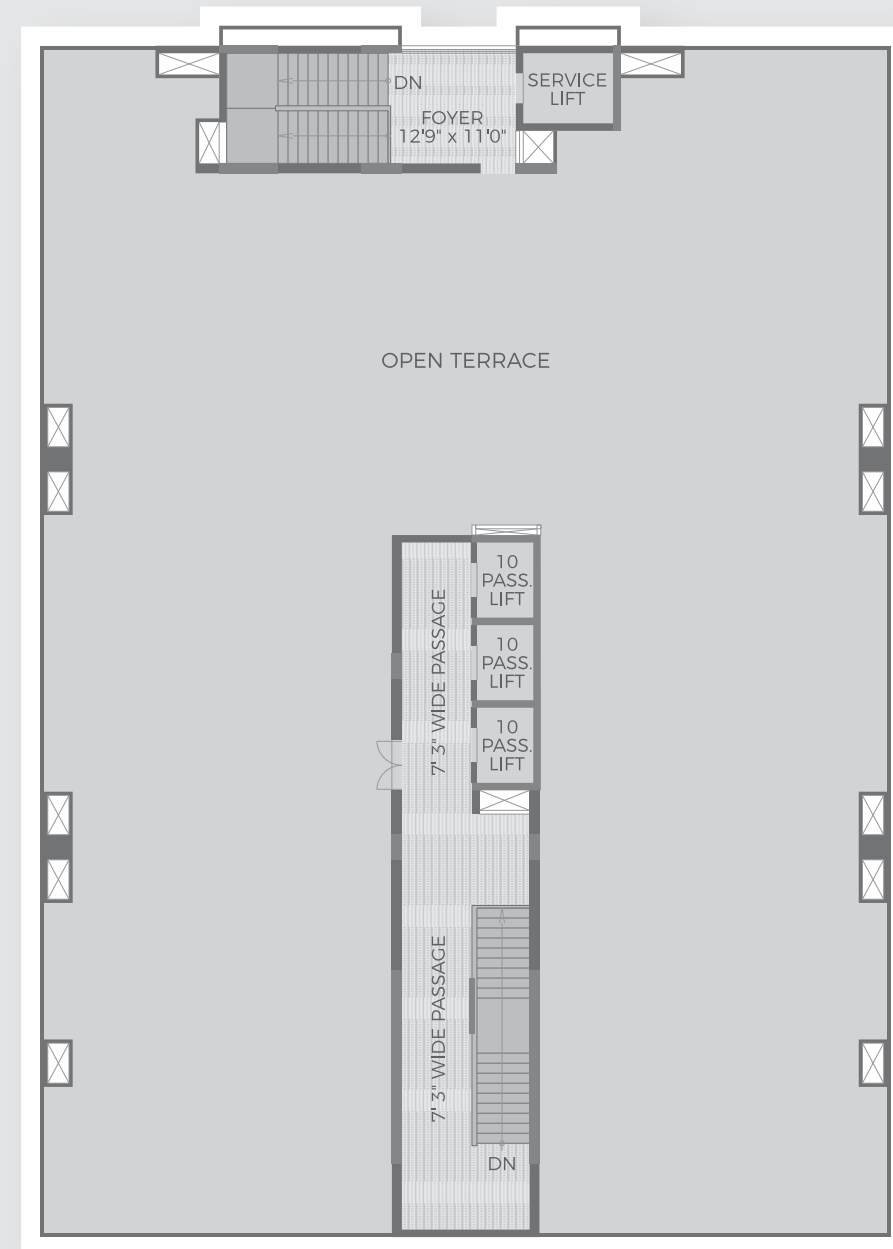
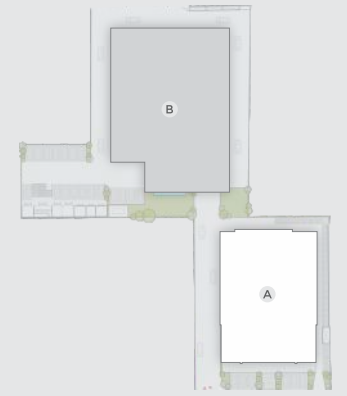
# TOWER - B

13th  
FLOOR PLAN



# TOWER - A

TERRACE  
FLOOR PLAN



# KEY PLAN

## SHILP® CORPORATE PARK



### SALIENT FEATURES

- 3 Basement parking
- Located - B/h. Rajpath Club, Rajpath Rangoli Road, Ahmedabad.
- Exclusive office Building (BLOCK B) with Hi end corporate look.
- Ample Parking Space At Ground Level & Basement.
- Gated Entry, Controlled Access Of Vehicles & CCTV Surveillance
- Elegant Landscaping
- 8 Elevators

### SPECIFICATIONS

- FLOORING**
  - Vitrified Tiles in all areas
- BATHROOM & PANTRY**
  - Lintel Height designer tiles
- DOORS & WINDOWS:**
  - Wooden Flush door & Aluminum windows