

**Showrooms for Sale**  
**In Shivalik Shilp 1**  
**@ S G Road, SG Highway, Ahmedabad**

**Manage By**



**Gujarat Rera Reg No. AG/GJ/AHMEDABAD/AHMEDABAD  
CITY/AUDA/AA00067/310822R1**

**Office Address: B-210, Titanium City Centre, 100  
Feet Rd, Near Sachin Tower, Satellite,  
Ahmedabad, Gujarat 380015**

**(M): [090672 31161](tel:09067231161)**

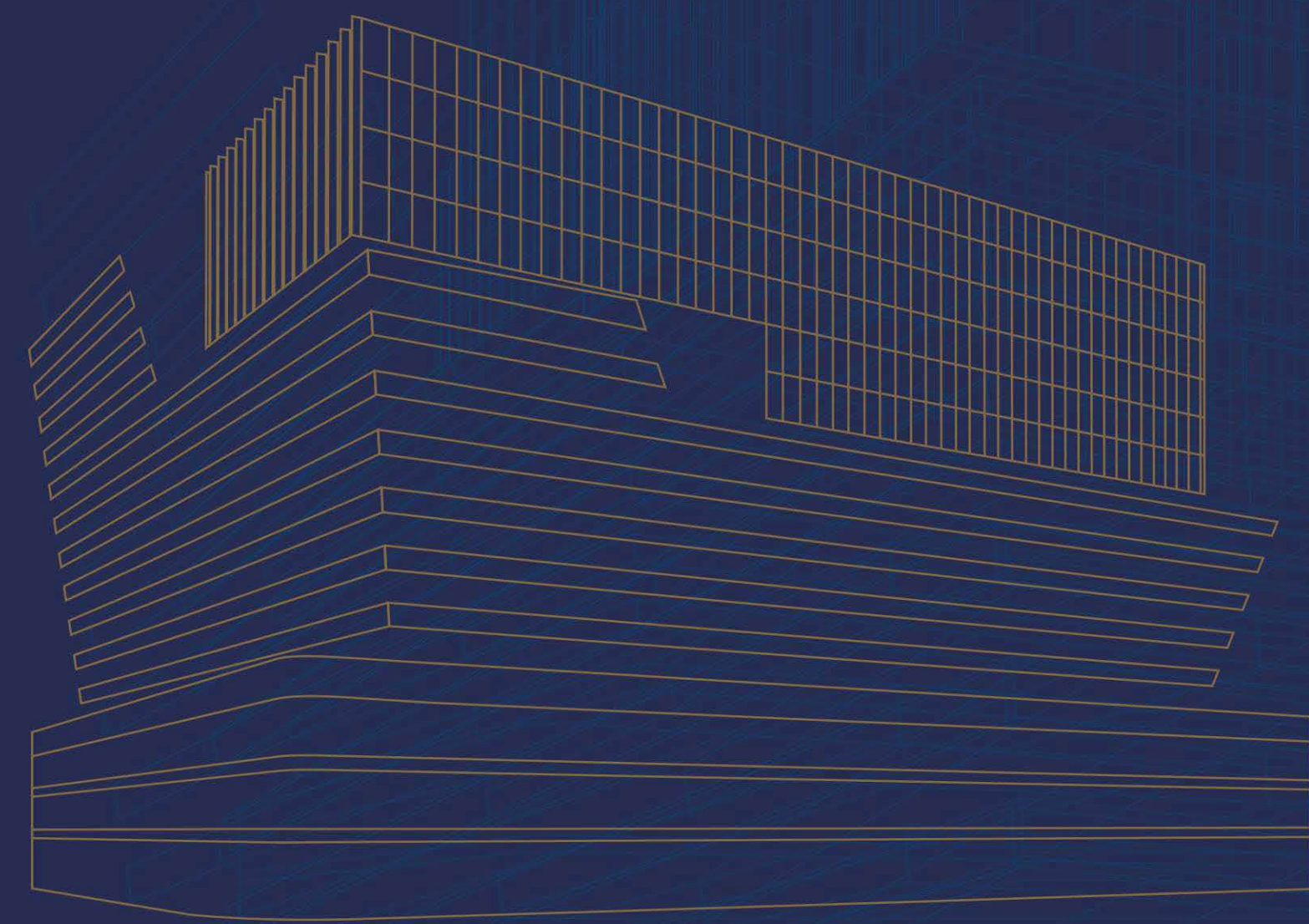
**(E): [info@bquickproperty.com](mailto:info@bquickproperty.com)**

**(W): [www.bquickproperty.com](http://www.bquickproperty.com)**





shivalik SHILP

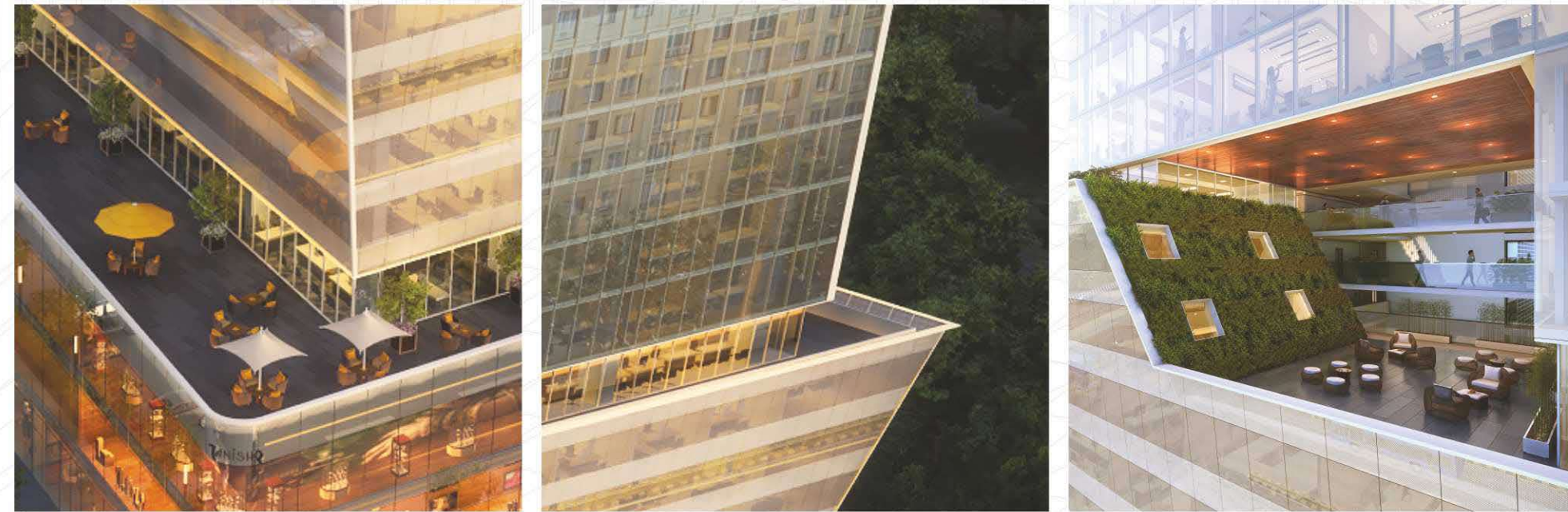


# YOUR GATEWAY TO BUSINESS EXCELLENCE

It's the ascension of progress and a modern junction for dynamic entrepreneurship. It is a place where possibilities become lucrative opportunities and business endeavors become thriving ventures. For some it will be an upgrade of their corporate persona, for others it will be a platform overlooking a plethora of prospects. But we consider it to be a Gateway, from where a new journey of your business will commence...

**Welcome to Shivalik Shilp – A World Class Business Centre Designed to Harness Opportunities**

# BASK IN THE EPITOME OF GRANDEUR



Shivalik Shilp represents opulence of engineering from every perspective. There is a dedicated leisure deck between floors, with both indoor and outdoor seating and provides comprehensive view of the magnificent city-scape. The structural design also deviates from conventional mould with angular outer construction, making Shivalik Shilp an iconic landmark of Ahmedabad's skyline.



ENJOY  
A 360° VIEW OF  
A PROGRESSIVE  
METROPOLIS  
shivalik SHILP

Outstanding construction of Shivalik Shilp breaks the traditional barriers and provides scenic walls that perimeter the entire structure. Pristine wall to wall frames give a breath taking view of the city life while giving ample natural ambient light that fosters the right entrepreneurial mindset.





## RELISH CONVENIENCE AT YOUR DOORSTEP



Interior View



Interior View

Shivalik Shilp is right in the middle of all the conveniences that the metropolis has to offer. It is also at the junction of the all major highways connecting you with the city and the rest of the world. Lined with subtle and elegant foliage, Shivalik Shilp offers a natural environment with ample seating areas and parking spaces away from any congestion or the streets.

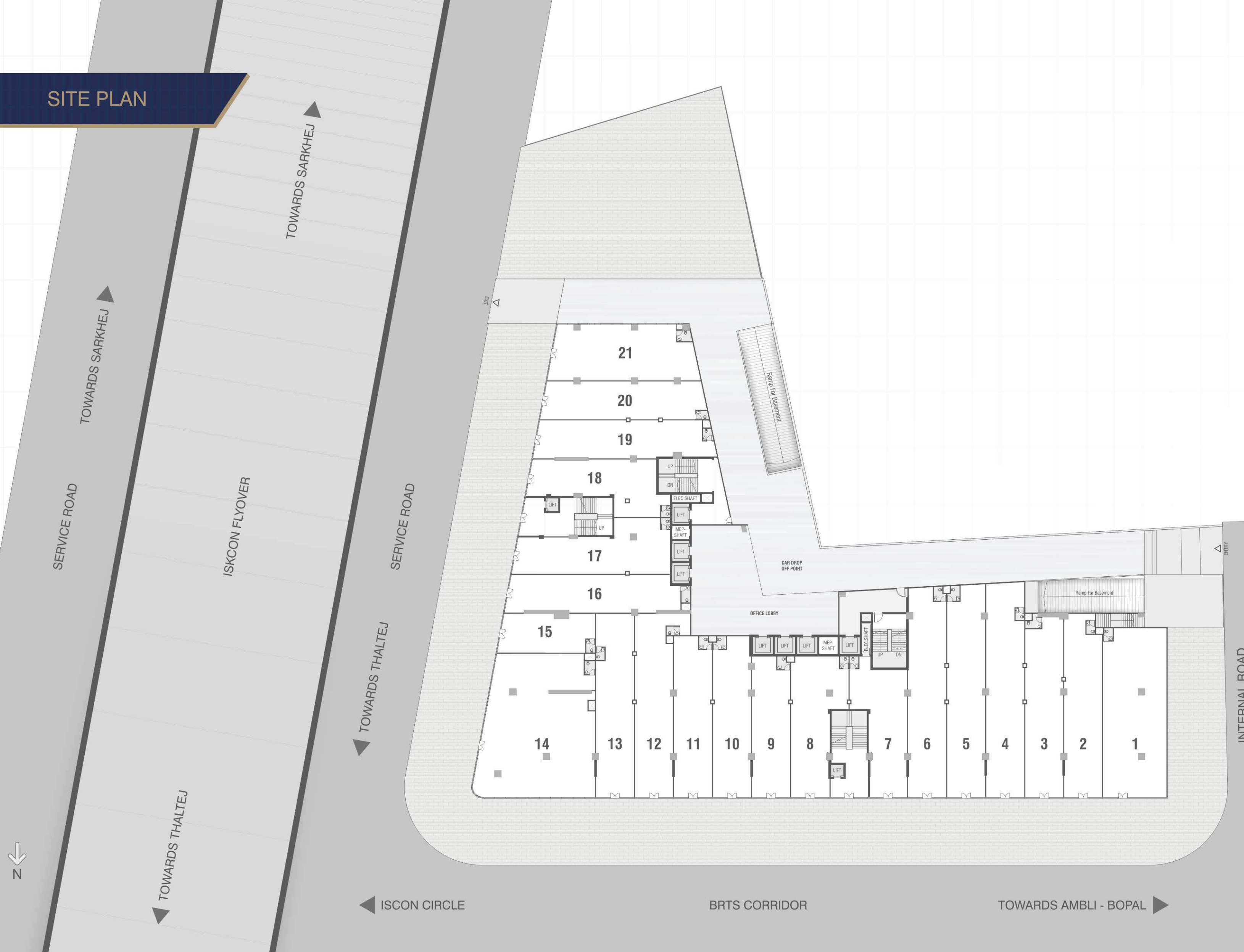
# HUES OF NATURE TO NURTURE BUSINESS SPIRITS



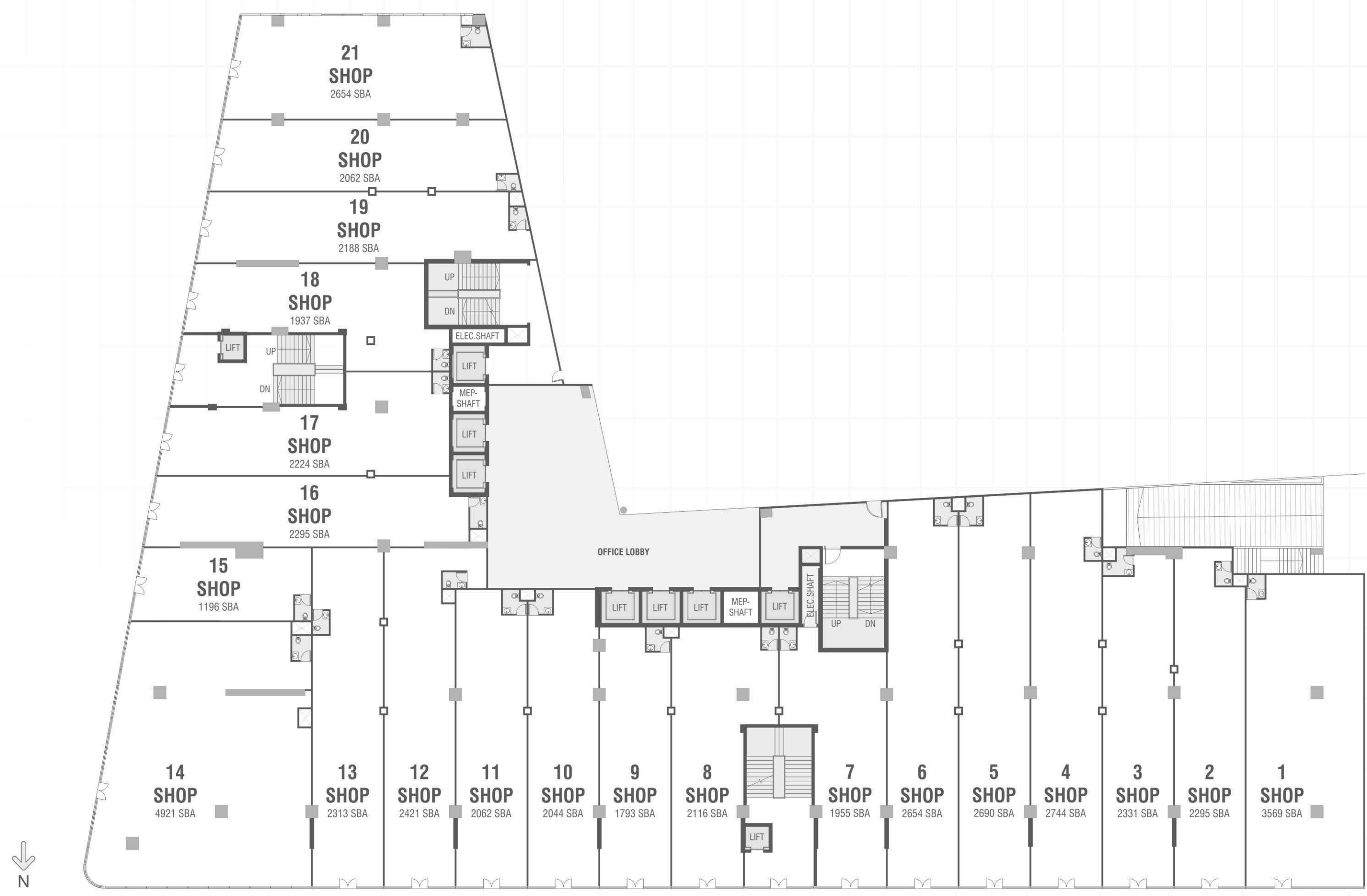
Shivalik Shilp's refined personality is embellished by a vast open garden space. It's the perfect opportunity to strike inspiring conversations or take a much needed break from your work space with a casual stroll in this lush premise.



# SITE PLAN

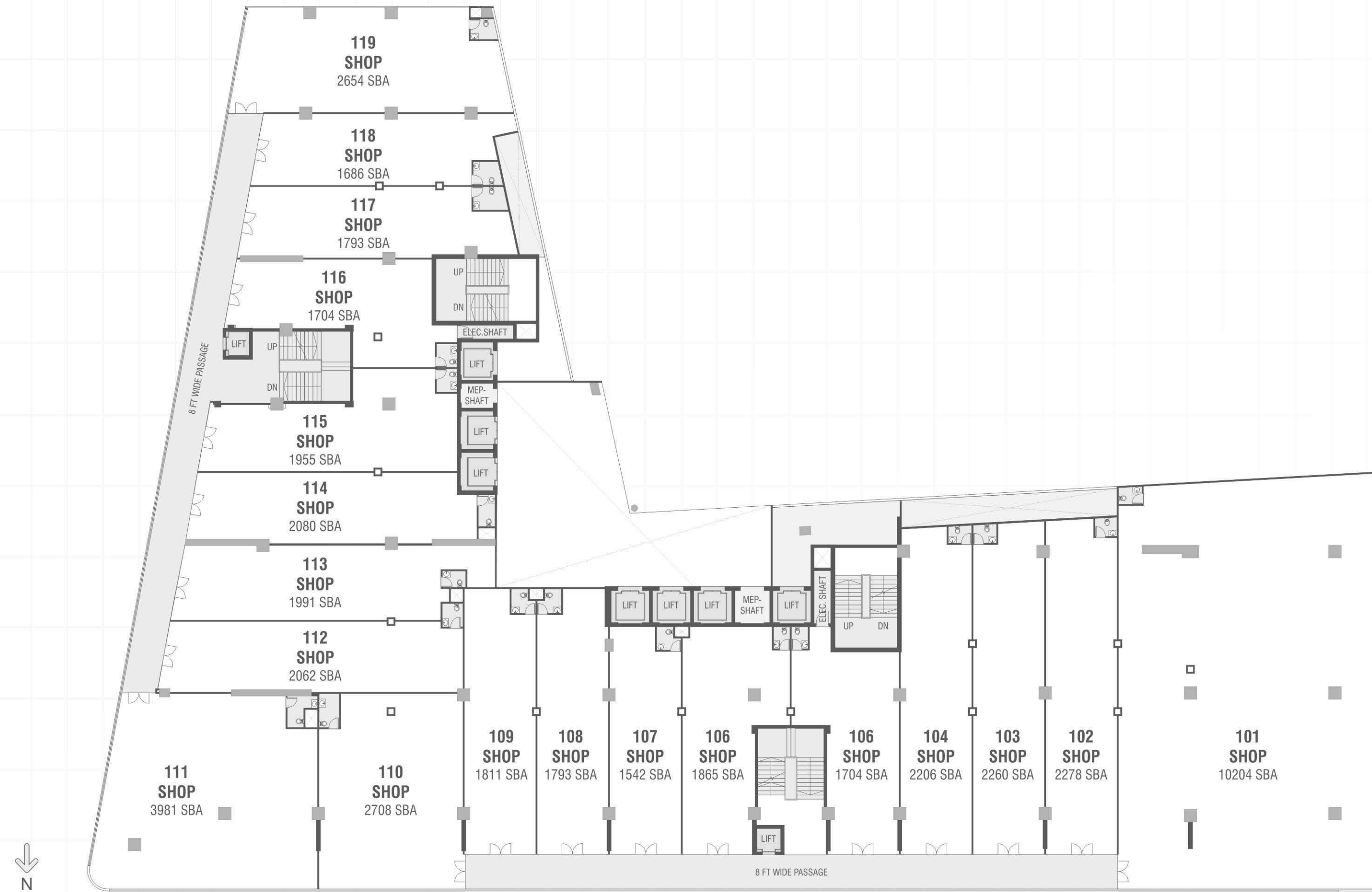


# GROUND FLOOR

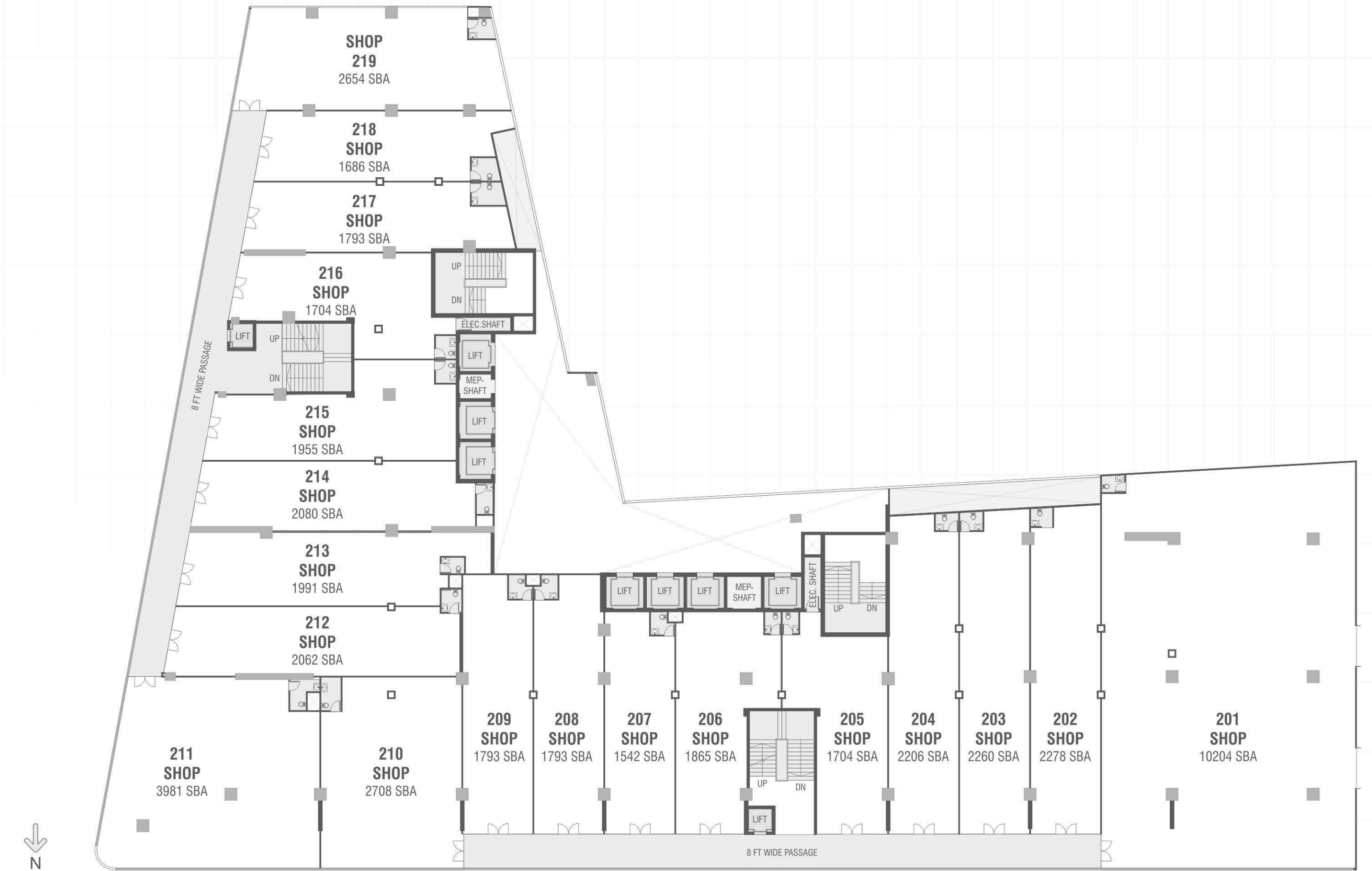




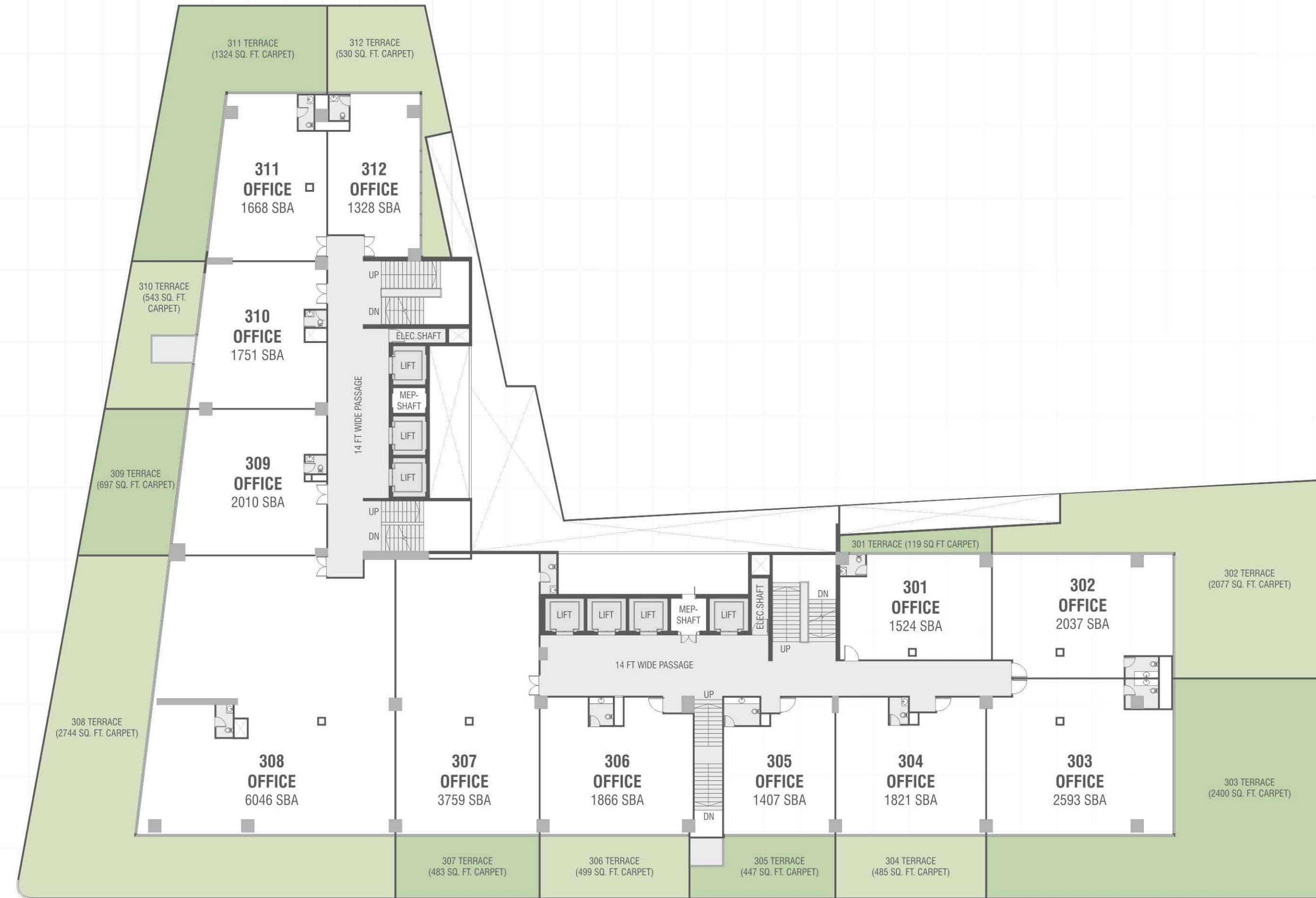
1st FLOOR



2nd FLOOR



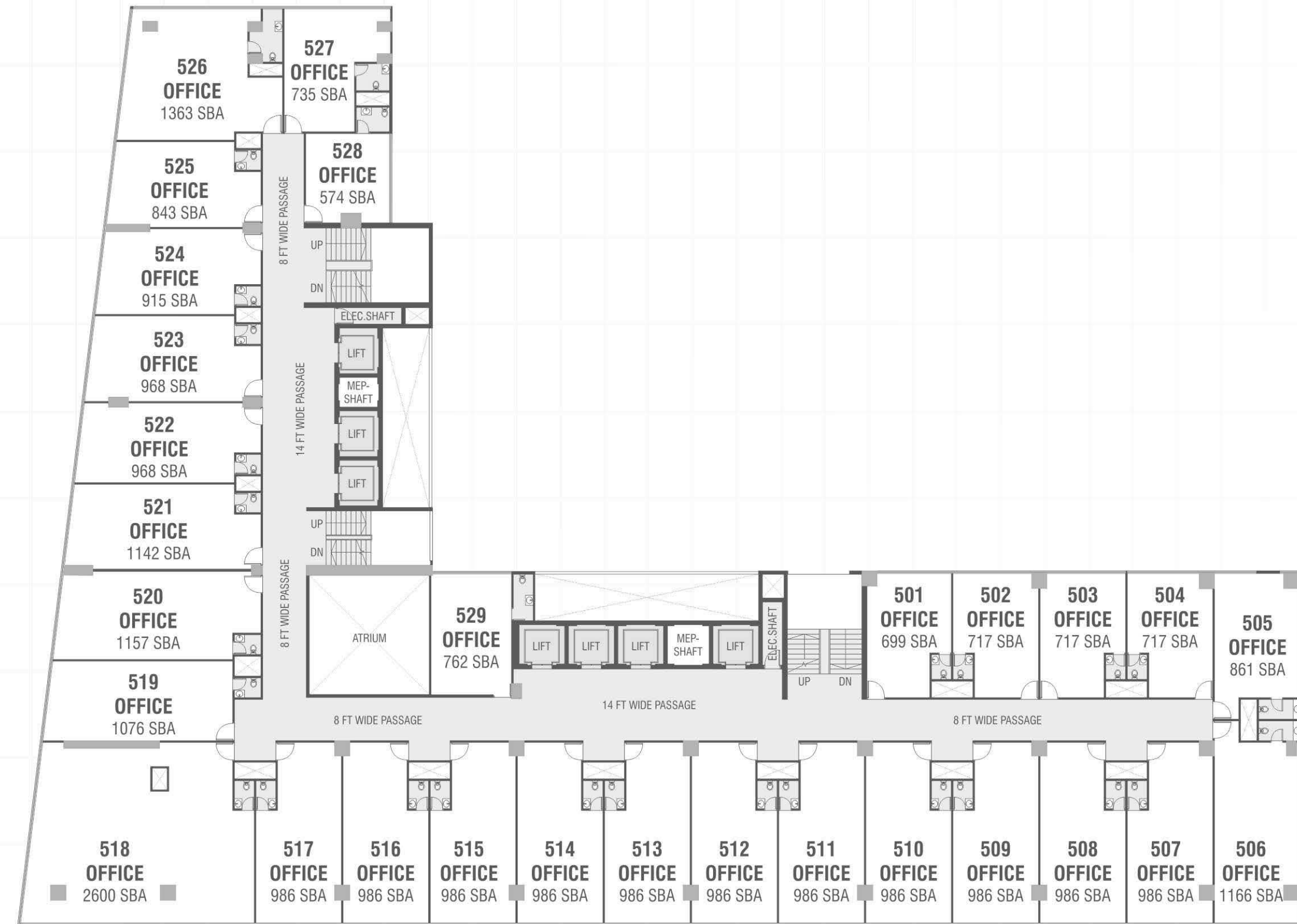
3rd FLOOR



4th FLOOR



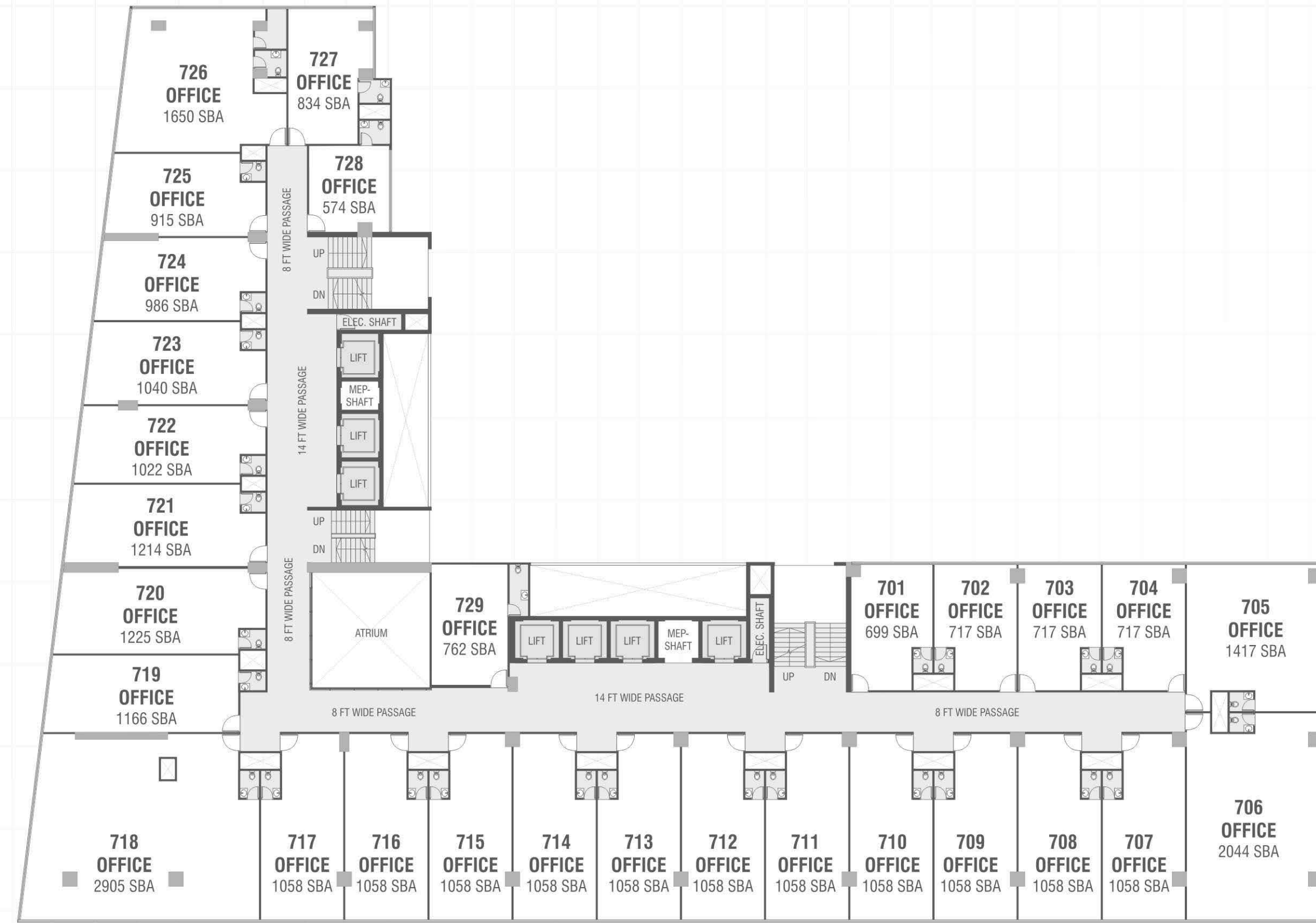
5th FLOOR



6th FLOOR



7th FLOOR



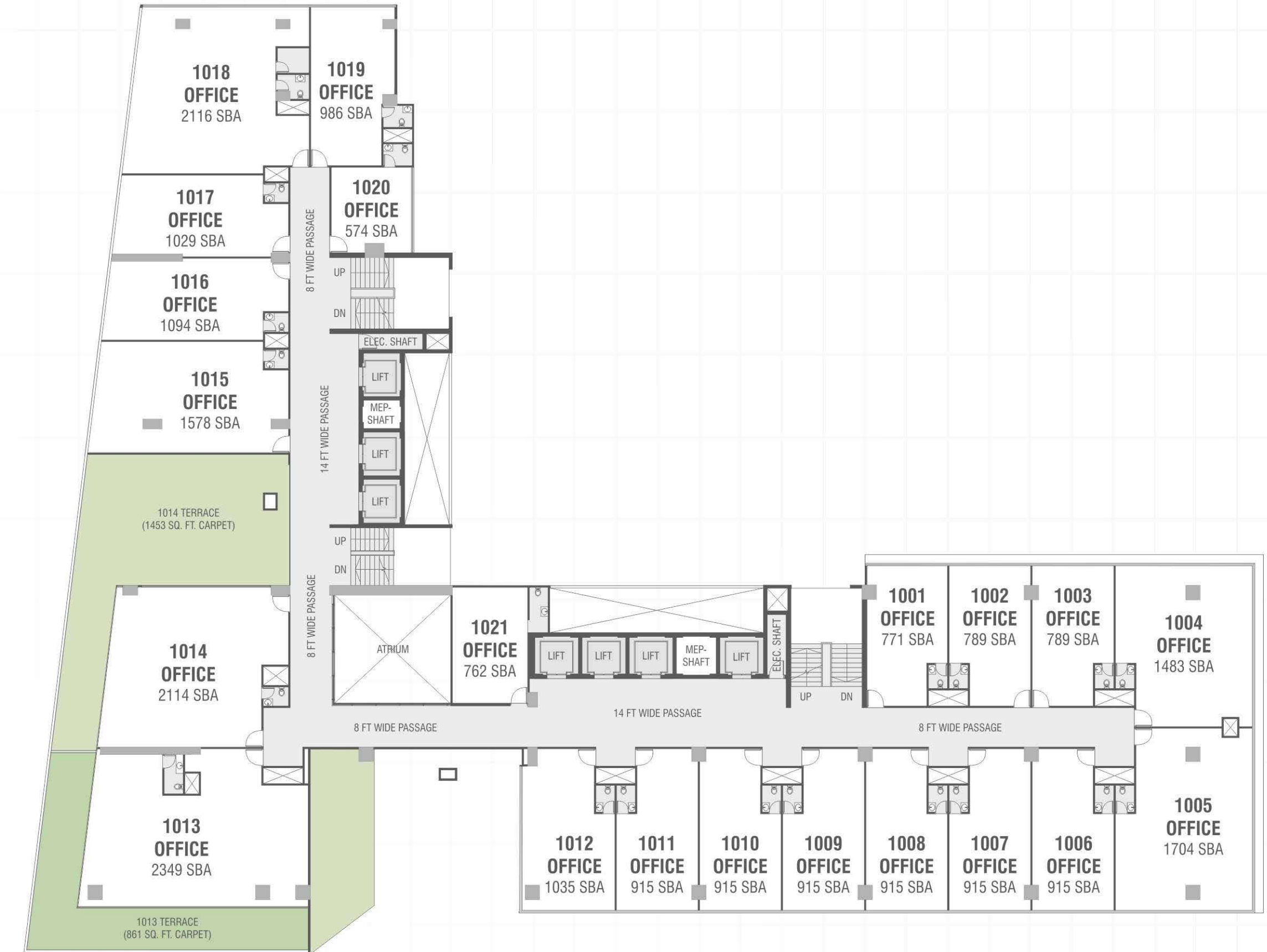
8th FLOOR



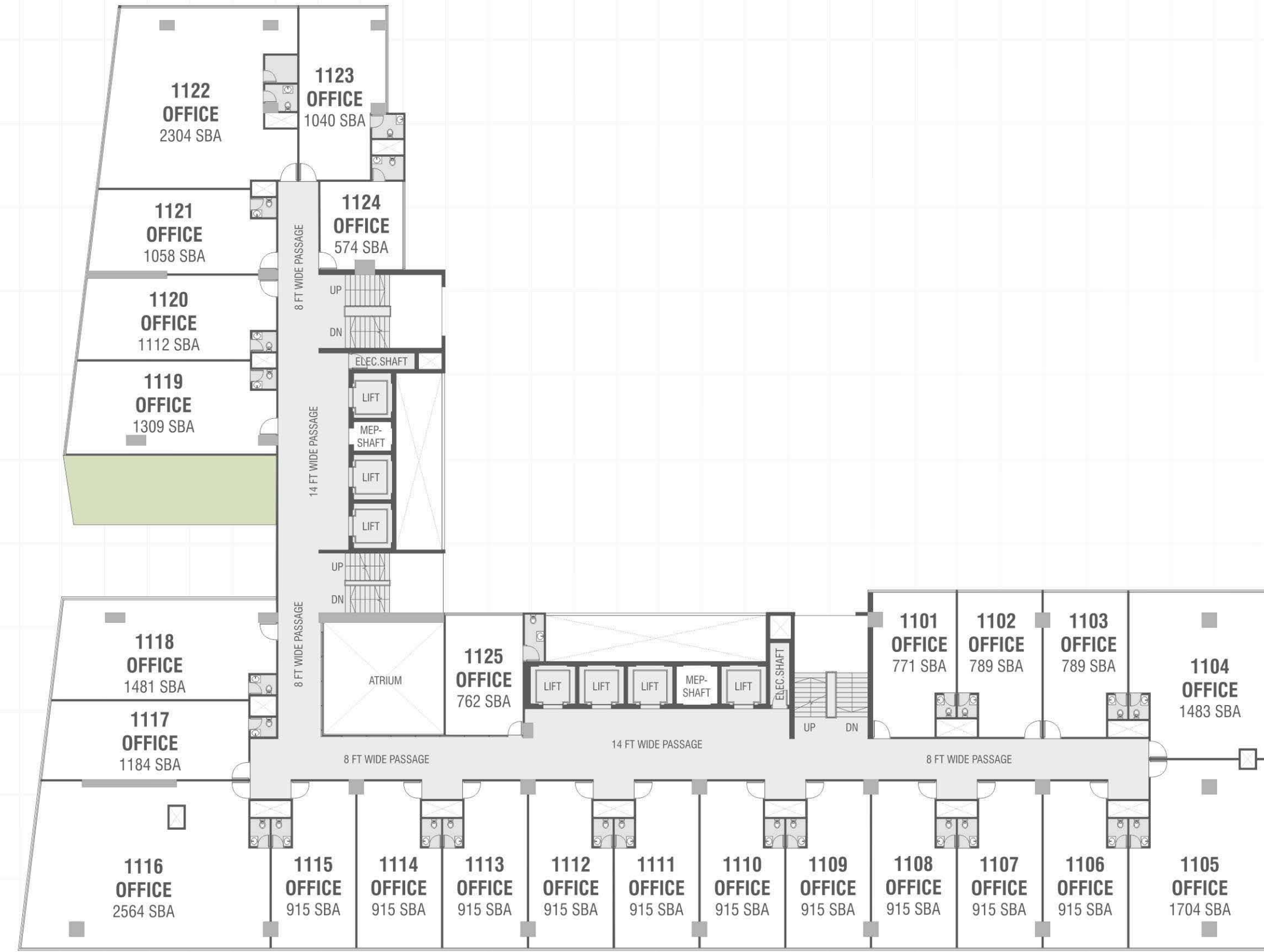
9th FLOOR



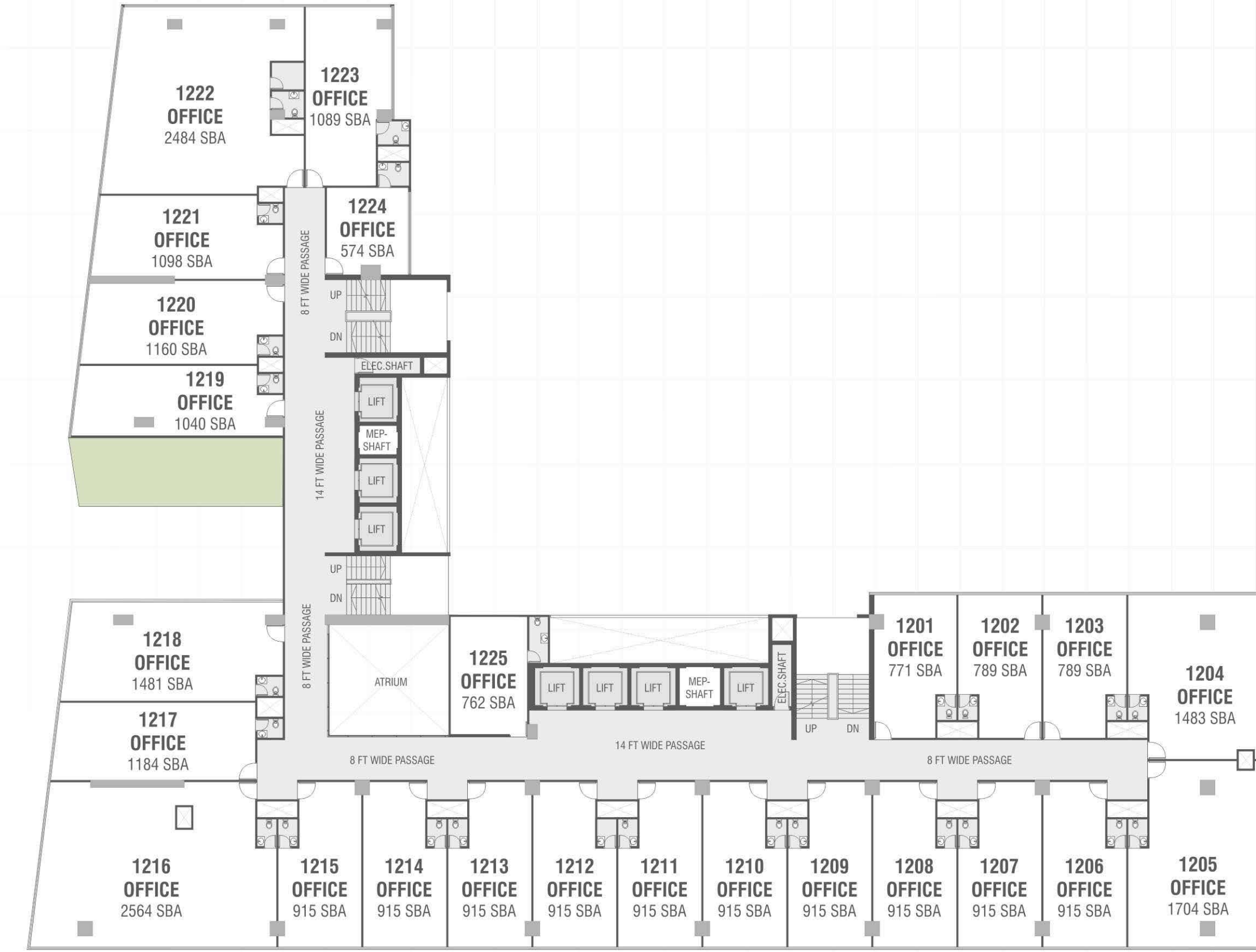
10th FLOOR



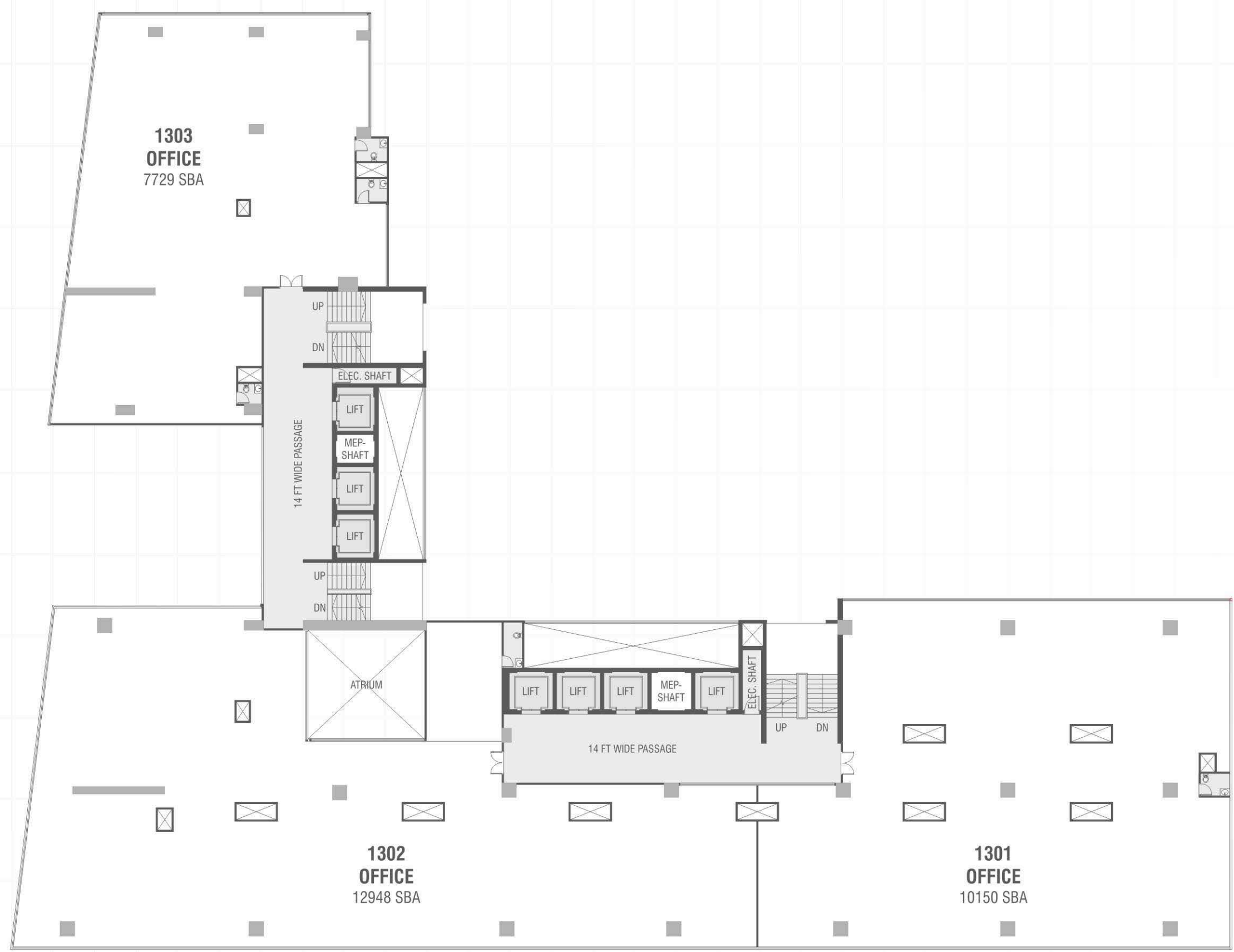
11th FLOOR



12th FLOOR



13th FLOOR



## GENERAL SPECIFICATIONS

### TILES FLOORING

STANDARD VITRIFIED

### ELECTRIFICATION

ADEQUATE ELECTRIC POINTS INCLUDING TELEPHONE POINTS

## SALIENT FEATURES

- ELEGANT APPEARANCE OF THE BUILDING
- WELL-PAVED MARGIN AREA
- 9 AUTOMATED ELEVATORS OF INTERNATIONAL COMPANY
- 24 HOURS WATER SUPPLY

## AMENITIES

### DESIGNED BY

INTERNATIONAL ARCHITECTS - STANTEC

### SHOWROOMS / OFFICES

### MULTI LEVEL PARKING

### ALLURING

ATRIUM

### ENTICING

LOBBY

